





# FURUNO

# THE WORLD'S MOST AWARDED FISH FINDER

voted  
**Best**  
fish finder  
by  for the last  
42 years



Auto Tuning Sensitivity



Enhanced Sunlight Viewable



Bonded LCD



Polarized Friendly



FURUNO Digital Filter



Bottom Discrimination



ACCU-FISH



Like us on Facebook

JOIN THE CHAT...KEEP UP  
TO DATE ON FACEBOOK

## FURUNO

CONTACT YOUR NEAREST  
AUTHORISED DEALER TODAY

[furuno.com.au](http://furuno.com.au)

+61 7 3900 2100

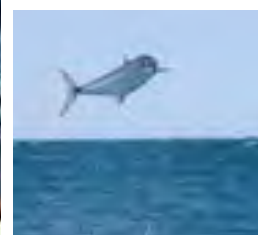
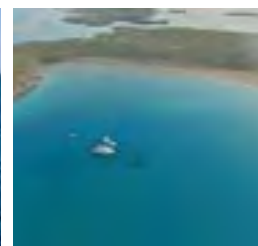
[admin@furuno.com.au](mailto:admin@furuno.com.au)





Club Committee.....	4
President's Message .....	5
Letter from the Editor .....	5
2016 Presentation Dinner .....	6
Shimano WA Open.....	8
Bluewater Tackle World	
Marlin Cup.....	12
Exmouth Charter Fishing.....	16
Northern Adventure.....	19
Dampier Classic.....	24
Carnavon Islands Mission .....	27
Tide Tables 2016 .....	30
Rottnest Trench FAD Chart.....	32
2016 FAD Season.....	34
New Member's Success .....	36
Rottnest Trench -	
Temperature Studies .....	38
Aitutaki – Cook Islands.....	40
Southern Bluefin Tuna.....	42
Club Rules and Trophy List.....	50
Measure and Release 2017 .....	52
GFAA Eligible Species .....	54
WA Game Fishing Records.....	55
2017 Season Calendar.....	64

# CONTENTS



## Front Cover:

The images on the front cover have all been provided by club members. The collage is designed around the elements of the club's activities being people, fish, boats, competition, fun and FADs.





# CLUB COMMITTEE 2017

**At the Club's Annual General meeting Held on 8th November the following members were elected to the committee for 2017**

President..... Tim Carson  
Vice-President..... Shane Anderson  
Secretary..... Deon van der Westhuizen  
Treasurer..... David Littlejohn  
Weigh-master ..... John Webber  
Committee ..... Teresa Belcher  
Committee ..... Peter Coote  
Committee ..... Ashley Hicks  
Committee ..... Mark Jamieson  
Committee ..... Dylan Picken

The Honourable Dr Kim Hames MLA was re-elected as the club's patron.

## CONTRIBUTORS

**These people contributed stories, images, editing and proofing of the contents of this magazine on a voluntary basis. Thanks to all and apologies to any who may have been inadvertently missed.**

Shane Anderson, Matt Baker, Josh Bruynzeel, Mick Campbell, Tim Carson, Philip Chalko, Peter Coote, Darren Douché, Tom Doyle, Mark Elliot, Ashley Hicks, Russ Jackson, Mark Jamieson, David and Albina Littlejohn, Chad and Leah Mills, Dale Moir, Les Moyle, Dylan Picken, Ben Pugh, Ben Punch, Chris Robertson, Mark Rossbach, Luke Ryan, Rachel Tees, Dave Thomson, Scott Turrell, Deon van der Westhuizen, John Webber, Ben Weston, Damien Wham, Craig White, Rhys Whittred and Johnno Wroth.

## OUR THANKS

### Editor

Peter Coote

### Production and Graphic Design

Jacques Polomé

## CONTACT US

Perth Game Fishing Club  
PO Box 57  
North Beach 6920

**Email:** [contact@pgfc.com.au](mailto:contact@pgfc.com.au)

**Website:** [www.pgfc.com.au](http://www.pgfc.com.au)





# PRESIDENT'S MESSAGE

**To all club members, sponsors and friends I would first like to start by saying thank-you for your support of and participation in the Perth Game Fishing Club over the last twelve months, as it is you who make our club what it is.**

It has been a busy period on the committee with a number of people taking on new roles and the transitioning of those associated responsibilities, so that we are not solely reliant on a few people to carry the majority of the administrative burden. While this can create an occasional hiccup in our day to day operations please bear with us as this wider exposure to key roles is critical to the success of the club in the future.

Times are tough for many with a dip in the local economy being felt across many fields. As such we have seen a slight reduction in both membership and sponsorship which we will be working hard

to monitor and maintain over the season.

During the last season we spent a lot of time discussing what members are looking for from the club. As part of this we have started to look at ways to invest value back to members. The first real example of this was the sword-fishing talk given by Richard Abela, where we were able to secure his exclusive time as an expert on the subject matter sharing his knowledge with our members. Feedback from this event was overwhelmingly positive. Based on this success we will be looking to investigate what other types of opportunities we can invest in for members over coming years. If anyone has a particular topic that interests them, please let a committee member know so we can review it as part of the overall plan.

Over the next season we intend to deliver a number of varied club competition days such as dedicated species days, a ladies and juniors competition and to

complete a review of the major sanctioned tournaments that we already run, to ensure that they are structured to meet the needs of those who participate.

The Marlin Cup and the WA Open take a huge amount of time and effort to arrange and run and I would encourage as many boats and anglers as possible to participate in these great events. We have had a number of other clubs indicate that they will be promoting these events to their members and we are hoping to see a dramatic increase in numbers in 2017.

In closing I would like to wish you and your families a wonderful festive season and hope to see as many of you as possible either on the water or for a chat and a drink at one of our social nights during the season.



Tim Carson  
President

## LETTER FROM THE EDITOR

**This 17th issue of Strike in 13 years is one of the most exciting issues that has been put together.**

Not only does it include the results of PGFC's tournaments and the experience of members in other events, but it has a number of articles which have to be considered as "frontier" adventure stories. How many of us have seriously thought about fishing at the back of Dorre Island or launching a solid trailer boat at the mouth of the Fortescue River to run across to the Monte Bello Islands? These are real life adventures which need thorough preparation and execution, not reliance on luck to ensure the expedition is completed safely and enjoyably.

Changes to the content this year include a reference article prepared by Dr Sean Tracey of the Institute of Marine and Antarctic

Studies. This concerns the capture and treatment of southern bluefin tuna based on that species in Tasmanian waters. It is equally relevant to all the pelagic species such as tunas, mackerels etc. that we catch in the west. We are grateful for Sean's agreement for it to be included. As in previous issues there are items about visits to Exmouth, the Mecca for many of us during the winter months, particularly in a weather affected season such as we had in Perth in 2016.

Communicating with members is an important function of the club. In an age where information about your selected sport or activity can be acquired free of charge with the press of a button, the club is pleased with the participation in its Facebook page, particularly the Members Only Area, as well as the readership and feedback on the Hook-Up newsletters which

by now must number somewhere well over 300 issues. Strike strives to complement those means of contacting members and non-members alike with interesting and entertaining articles and reference materials, useful for the entire year. It is part of the continuing package PGFC members receive to reward and stimulate interest and loyalty.

In the reports on the Club's main competitions this season a new crop of faces is showing up on the trophy list, consistent with the apparent shift in the membership towards a younger membership.

Thanks to all who have contributed to and supported Strike again this year.



Peter Coote  
Editor





# ANNUAL PRESENTATION DINNER

There was Shano, Jamo, Davo, Rossco, a couple of Andy's and Kevo's, Matty and Wazza. Damo and Johnno couldn't make it. And neither could the main man for the night Picko.

A great presentation night at RPYC Crawley in intimate surroundings. It wasn't a big crowd due to a number of 40th's on the same night, but a good time was had by all under the guidance of MC Rhyss Whittred.

The evening got underway with a welcome to our Patron Dr Kim Hames MLA, Life Members, sponsors, members and guests with a special welcome to the Officer family, coming along for the first time to present the Michael Officer Trophy.

This was followed by the presentation of 25 Year Membership pins by Kim Hames to Rona Biernat, collecting husband Bob's pin. Peter Coote was also awarded a 25 year pin. Unfortunately other recipients, Stephen de Courtenay, Barry Patterson, John Prince, Trevor Scott and Phil Volich, all 25 year members, were unable to attend.

Award presentations began with line class categories, this year's recognition with specially minted medallions bearing the PGFC logo and inscribed with the winners' names. The special awards ensued with the prestigious club trophies gracing the tables of the winners.

The Marlin Cup held off Rottnest Island last February was the setting for Brad Williams, as angler, to tag and release a blue marlin from Matt Baker's 6m Caribbean "Cougar".



Rona Biernat accepts Bob's 25 year award from Kim Hames



Lisa Powell accepting the Kay Webber trophy from Kay Webber



Susan and Brian Officer congratulate Brad Williams (left) and Matt Baker on winning the 2016 Michael Officer Trophy

Award	2016 winner	2016 points	2015 winner	2015 points
Highest points scoring boat	Rock 'N' Roll	9128	Rock 'N' Roll	16701
Eddy Moss Trophy – highest points scoring angler	Dylan Picken	4859	Dylan Picken	12380
Kay Webber Trophy – highest points scoring female	Lisa Powell	2234	Lisa Powell	6084





The team's first tournament as new members of the club was a multiple success with them winning the Michael Officer Trophy, the Basil Downs Trophy for Brad and the Pannawonica Trophy for the Matt's boat.

It was a highlight of the evening to have Michael's parents Sue and Brian present the magnificent trophy cast in Michael's honour. The many who knew Michael appreciated the relevance of the award.

Dylan Picken (Picko) was unavailable due to work commitments, however Scott Turrell was able to stand in for him. Scott picked up a couple of awards too, including a Club Trophy and Line Class medal.

Dylan did very well being awarded the Eddy Moss Trophy for the highest points scoring angler for the second time in succession, the Patron's Trophy for the most species tagged, and the Ivan Quartermaine Trophy for highest number of fish tagged.

Brian Arnett's and Phil Volich's Rock'N'Roll won champion boat by a good margin reflecting the crew's commitment to fishing all season. Lisa Powell, on of the two women anglers in that team, again won the award for Champion Female Angler.

Shane Anderson was awarded the Neil Patrick trophy after winning on a countback from Brian Arnett, both tagging and releasing three marlin outside local waters.

Shane Walton's certificates for a record 13.15kg amberjack on 6kg was also presented on the evening.

Across the board the points scored in 2016 versus 2015 were down somewhat due to a more subdued fishing season, partially because of the weather. This is apparent in comparing the top three awards for each year. ■

*All images - Les Moyle*



# CLUB CHAMPIONSHIP AWARDS

CATEGORY	AWARD DESCRIPTION	AWARDED TO
President's Trophy	Boat with the highest points in local waters	Rock'N'Roll 9128 pts
Club Trophy – Runner Up Boat	Boat with second highest points in local waters	Whiskers 3881 pts
Eddy Moss Trophy	Male Angler with highest points in local waters	Dylan Picken 4859 pts
Kay Webber Trophy	Female with highest points in local waters	Lisa Powell 2234 pts
Club Trophy - Runner Up Angler	Male Angler with second highest points in local waters	Brian Arnett 3431 pts
Club Trophy – Runner Up Angler	Female Angler with second highest points in local waters	Rachel Tees 1782 pts
Tom Bell Trophy	Highest point scoring fish weighed in local waters	Darren Bowden 8.5kg mahi mahi on 3kg
Club Trophy	Highest point scoring fish tagged in local waters	Damien Wham Whaler shark on 4kg
Pannawonica Trophy	Boat with highest points for billfish in local waters	Cougar 1375 pts
Michael Officer Trophy	Team trophy for the first marlin tagged and released on a Club registered boat by a Club member in local waters	Cougar Bradley Williams - Angler Matt Baker - Skipper and wireman
Roland Smith Trophy	Largest game fish weighed excluding marlin and sharks in local waters	Warren Jolley 14.07kg Samson fish
Patron's Trophy Carl Georgeff	Most species tagged and released in local waters	Dylan Picken 6 species on countback
Basil Downs Trophy	Angler with highest points tag and release marlin in local waters	Bradley Williams 1375 pts
Club Trophy	Highest point scoring fish outside local waters	Scott Turrell 17.6kg Spanish mackerel on 4kg
Ivan Quartermaine Trophy	Angler with highest number of fish tagged in local waters	Dylan Picken 31 fish
Maher Family Trophy	Highest point scoring mackerel weighed	Deon van der Westhuizen 11.6kg on 8kg line
Neil Patrick Trophy	Most tagged and released line class marlin worldwide except local waters	Shane Anderson 3 fish
Line class local waters	2kg 4.8kg striped tuna	Susan Chappell
	3kg 8.5kg mahi mahi	Darren Bowden
	4kg 11.02kg Samson fish	Warren Jolley
	6kg 14.07kg Samson fish	Warren Jolley
	8kg 11.16kg Spanish mackerel	Deon Van Der Westhuizen
Line class outside local waters	2kg 3.3kg snapper	Ashley Hicks
	4kg 7.3kg Queenfish	Darren Hort
	6kg 12.7kg Spanish mackerel	Scott Turrell
	8kg 10.4kg Spanish mackerel	Mick Campbell





# PERTH GAME FISHING CLUB SHIMANO



**The weather Gods were kind to us this year with three very fishable days, typical of early autumn. Five boats made their way up the coast whilst another eight were trailered to the fabulous fishing destination of Jurien Bay.**

Thursday night's (31st March) briefing at the Jurien Bay Country Golf Club was well attended with four boats, Graeme Allen's "Crystal Jade", Matt Mayne's "Snow Goose", Dave Littlejohn's "Albatross" and Ben Punch's "Short Black" all being first timers for the comp. Crews were introduced and tournament grab bags handed out.

The Friday morning sailpast behind last year's winner, Rhyss Whittred's "Ashram", was followed by a shotgun start with Merv Russell's "Centrelink II" and Jonathon Mase's "3 Drops" showing a clean pair of heels to the rest of the fleet.

Fishing was slow for much of the day with only six boats managing to catch or tag eligible fish from cool dirty water. The highlight of the afternoon was Mark Jamieson skipper of "Likely Story", weighing in a new World Record 12.7kg Samsonfish on 6kg line class.

After a long day on Friday the mostly fatigued teams regrouped at the golf club on Friday night.

Saturday had many of the keenest boats at the ready for the 0630 lines in call. It proved to be a much better day with clean warm water bringing marlin with it at the margins of the continental shelf. Tim Carson's "Deeper Still" raised four marlin and Matt Baker's "Cougar" two, both without solid hook-ups. Peter Coote's "Jelomi" and Shane Anderson's "Vanquish" hooked up on marlin only to lose them after a short time. Warren Jolley aboard "Likely Story" eclipsed his skipper's previous day's World Record Samsonfish with a 14.07kg specimen again on 6kg. Mark Jamieson's World Record had lasted just 24 hours!

Most of the fish on day two were Samsonfish and mulloway caught on the wreck and reefy structures in less than 50m of water. There were also mahi







**Champion Boat - Likely Story**

mahi and Spanish mackerel caught in deeper and shallow water respectively. Striped tuna, whilst not abundant, showed up under birds feeding on small bait fish.

Warren Jolley was presented with the inaugural Jurien Bay Hotel Perpetual Trophy for the highest point scoring angler on day two, at the well attended dinner held at the hotel on Saturday evening.

As has become expected over the past 5 years of competitions at Jurien Bay, the third day decided the winners. An early start on a crisp morning, for those hopeful of getting points in this best two days of three event, saw many boats out wide by the lines in call to protect their positions.

Hopeful of a continuation of the warm marlin rich water of the previous afternoon those chasing marlin on the billfish side of the comp were disappointed in the cooler dirty water that returned beyond 500m, although Merv Russell's "Centrelink II" did raise a marlin. A bonus was clean warmer water in a tongue that extended through the 50m section between the banks. New boat "Short Black" had an excellent day resulting in crew Rachel Tees earning the coveted Ivan Erceg award as well as champion female angler.

Scoring species for the weekend were mahi mahi, mulloway, Samsonfish, Spanish mackerel, striped tuna, snapper and yellowtail kingfish. The marlin score for the comp was 10 raised, two hooked and none tagged.

Reflecting on the past five years of Jurien Bay events it appears that teams need to be ready for anything, with year one turning up sailfish and marlin, year two billfish again, year three a flood of tuna and last year record yellowfin tuna and near misses on billfish.

The presentation night was reduced a little in numbers due to those needing to get back to Perth for work or school obligations. We were privileged to welcome Col Fieldhouse from Shimano to make the awards to successful anglers and teams.

Final statistics for the event were a little down on the previous year despite more boats and an earlier event.

The club would like to thank the volunteers at the Jurien Bay Country Golf Club for their efforts in keeping everyone watered and fed, and particularly the Jurien Bay Volunteer Marine Rescue Group for their professional radio coverage of the event.

The whole Jurien Bay community got behind this year's comp again and we would like to thank all those local sponsors who made it such a success.

Looking forward to a bigger, brighter event and more fish at the Shimano WA Open in 2017 with the briefing night on March 30th.

[Continued page 10 >](#)



**Mark Jamieson (L) and Warren Jolley with their World Record captures - Image John Webber**





# RESULTS

## Billfish Category

**SHIMANO Champion Boat Billfish** – No eligible captures

**Bluewater Tackle Runner-up Boat Billfish** – No eligible captures



## Species Category

**SHIMANO Champion Boat – Champion Boat trophy**

Likely Story – Skipper Mark Jamieson – 2178 Points

**City Beach Builders Runner-up Champion Boat – Runner-up Champion Boat trophy**

Ashram – Skipper Rhyss Whittred - 1496 Points

## Tournament Category (includes billfish and species)

**SHIMANO Champion Boat - Tournament Champion Boat Trophy**

*Invitation to participate in the 2017 Offshore World Championship Tournament in Costa Rica*

Likely Story – Skipper Mark Jamieson – 2178 Points

**Bluewater Tackle Runner-up Champion Boat**

*Tournament Runner-up Champion Boat trophy*

Ashram – Skipper Rhyss Whittred - 1496 Points

**SHIMANO Champion Male Angler - Bluewater Tackle Voucher for \$750 of Shimano product**

Warren Jolley – Likely Story – 1478 Points

**On Strike Charters Runner-up Champion Male Angler - Shimano Tiagra 30WA reel**

Mark Jamieson – Likely Story – 1313 Points

**SHIMANO Champion Female Angler - Bluewater Tackle Voucher for \$750 of Shimano product**

Rachel Tees – Short Black – 671 Points

**Billabong Pools Runner-up Champion Female Angler - Shimano Talica 10 2 speed reel**

Sue Chappell – Crystal Jade – 244 Points

**SHIMANO Champion Junior/Small Fry Angler - Shimano Talica 10 2 speed reel**

Not awarded

**On Strike Charters Runner-up Champion Junior/Small Fry Angler**

*Bluewater Tackle Voucher for \$250 of Shimano product*

Not awarded

## Special Awards Category

**Highest Point Scoring Fish on a Halco Lure – Halco Lure Pack**

Deon van der Westhuizen - Striker

**Highest Point Scoring Fish on a Richter Lure – Richter Lure Pack**

Chris Papanoum – 3 Drops

**Highest point scoring fish**

*Bluewater Tackle Voucher for \$250 of Shimano product*

Warren Jolley – Likely Story

**Jack Clugston Medal**

*Medallion awarded to the angler with the highest point scoring angler on day one*

Warren Jolley – Likely Story

**Ivan Erceg Medal – from Nextside Concrete Contractors**

Rachel Tees – Short Black

**Jurien Bay Hotel Perpetual Trophy**

*Trophy awarded to the highest points scoring angler (tournament) on day 2.*

Warren Jolley

**Taylor Marine Best Photographic Prize** – Russ Jackson



Warren Jolley – Awarded the Jack Clugston Medal by Shimano's Col Fieldhouse - Image Tim Carson



Champion Boat - Likely Story Team - Image Tim Carson





# SHIMANO

FIGHT NATURE'S TRUE POWER  
**WITH YOUR OWN**

## TWIN POWER SW

TWINPOWER 4000SWBXG - 5000SWBXG - 8000SWBPG - 10000SWBPG - 14000SWBXG



# HAGANE

## SMOOTH, STRONG, DURABLE

HAGANE is Shimano's reel design concept which aims at Smooth, Strong and Durable reels. We've taken our unique metalworking technology, including precision cold forging, to extreme levels in pursuit of the reels that only we can produce. Shimano reels, with their impressive smoothness and overwhelming strength, backed by the HAGANE concept, have been the favorites of discerning anglers for years. The more you use it, the more you realize the value of HAGANE. These reels truly reflect Shimano's unflinching determination and commitment to excellence.

Check your local Shimano Stockists today.

[shimanofish.com.au](http://shimanofish.com.au) | [facebook.com/Shimano.Fish](https://facebook.com/Shimano.Fish) | [youtube.com/ShimanoAustralia](https://youtube.com/ShimanoAustralia)



# BLUEWATER TACKLE WORLD MARLIN CUP



Run over the weekend of the 20th & 21st of February, the 2016 Marlin Cup saw 20 boats and over 70 anglers take to the waters off Rottnest Island.



Better than expected conditions greeted the fleet for the sail past on Saturday morning. Highlights of the start were the number of new boats and new members competing with most boats regaled in flags and other decorations. Rhyss Whittred's "Ashram" crew dressed up as fairies, complete with frilly blue skirts and were topless to boot. After acknowledgement from club President Tim Carson, boats lined up for the shotgun start and at 08:00am were underway.

Favourites for the hole shot were the crew of Freeman 33 and they didn't disappoint. The smaller boats took the lead across Thomson's Bay, but once they rounded Bathurst Point and headed into the seas it was the bigger vessels that were able to stretch out their legs. Most teams headed to the north of Rottnest Island aiming for the northern end of the Rottnest Trench.

After a quiet start, Freeman hooked a marlin without landing it. Late morning saw "Cougar" radio in the first marlin tagged to get on the scoreboard. Things picked up after lunch with "Carribean" and "Rockall" hooking up but unable to

keep the fish on. "Vanquish" hooked a sizeable blue marlin late in the afternoon. After a manic first run the fish was subdued and was coming up to the boat for tagging when the hooks pulled. The fleet was quite spread on Day 1, however the majority of the action for the day was toward the northern end of the trench, west of the Hillarys FAD. Overall statistics were 6-4-1 for Day 1, with the challenges of keeping a lure-hooked fish on for the

whole fight very evident.

Day two welcomed the anglers with overcast but otherwise excellent conditions that improved during the day. Again the fleet was very spread, although more activity took place closer in than on day one. Action was seen early on with "Rockall" tagging a fish just before 9am. Other teams seeing some action during

*Continued page 14*





# HOOK UP WITH A LOCAL



**PROUD SPONSOR OF  
PERTH GAME FISHING CLUB**

**10%**  
**DISCOUNT FOR  
PGFC  
MEMBERS!\***

**LOCAL KNOWLEDGE.  
LOCAL ADVICE.  
THAT'S THE BLUEWATER  
DIFFERENCE.**

\*Exclusions apply, see instore for details.

**NEW!**

**JOONDALUP**

2/19-21 Honeybush Dr  
6244 0344

**MINDARIE**

4/1 Sarasota Pass  
9407 9766

**MORLEY**

140 Russell Street  
9375 9800

**MYAREE**

85-87 North Lake Rd  
9330 7766

**WWW.BLUEWATER.NET.AU**







### Marlin Cup (continued)

the morning were "Southern Blue" and "Cougar". Afternoon again saw the bite pick up with a number of boats raising and hooking fish, with Rock "N" Roll able to get a tag in a marlin for Kevin Baker, his first in local waters. "Ashram" had a suspected blue marlin hit a lure and take-off on a typical run; unfortunately they could nothing to stop the run and eventually busted off. Final scores for day two were 8-7-2.

A few notable events after lines-out on Sunday: Azura managed to land a sizeable wahoo, and the unlucky streak continued with the team on Southern Blue, hooking and dropping their third billfish for the day.

In all it was another successful tournament for the club with 14 marlin raised, 11 hooked, 3 tagged, and a great weekend for all participants.

Totals for the weekend were 14,11,3 which is a great result for Perth local waters early in the year and begs the question: how many marlin are we missing because we don't fish the area as much as we would like to? Final results were reviewed and presentation of awards made at the Social Night on March 1st.

The club received many emails congratulating it and Shane Anderson in particular, on a well-run tournament with good conviviality displayed by all. Thanks are extended to Fremantle VSRG's volunteer radio operator Brad Collins who did an excellent job and set a new level of professionalism. ■



## AWARDS

<b>Marlin Cup</b>	Cougar - Matt Baker
<b>Bluewater Tackle Champion Boat</b>	Cougar - Matt Baker
<b>Runner Up Boat</b>	Rockall - Mick Callan
<b>Cape Bouvard Champion Angler</b>	Brad Williams - Cougar
<b>Richter Lures Runner Up Champion Angler</b>	Mick Callan - Rockall
<b>City Beach Builders - 1st Boat to tag a marlin</b>	Cougar
<b>City Beach Builders - 2nd Boat to tag a marlin</b>	Rockall
<b>City Beach Builders - 3rd Boat to tag a marlin</b>	Rock "n" Roll
<b>All Marine Photographic Prize</b>	Russ Jackson







## Secure, Smart & Simple Storage Solutions

Hook up with some top class storage options!

What's on offer?

- ✓ All weather loading bay
- ✓ Unprecedented security including individual unit alarms and 24hr CCTV
- ✓ 24/7 PIN coded access
- ✓ Selection of sizes to suit personal or business needs
- ✓ Free move-in truck or trailer
- ✓ Full range of boxes and packaging material available
- ✓ Insurance for your valuable possessions

**IN ADDITION WE ARE OFFERING SPECIAL RATES TO ALL PGFC MEMBERS!**

Visit our friendly staff at one of our sites :-

295 Stock Road O'Connor or phone 08 92002252

46 Ledger Road Balcatta or phone 08 92006252

[www.keepersafestorage.com.au](http://www.keepersafestorage.com.au)





# EXMOUTH CHARTER FISHING AND THE WEARY CHINESE



Josh Bruynzeel's charter operation, On Strike Charters, has been a firm supporter of PGFC since he first got going in Exmouth. His yearly updates on Exmouth activity have always made a good read as does this summary of the 2016 season.

## “Wow!

Another 12 months has slipped past, and another PGFC STRIKE magazine is issued. We hope you had a great year and the weather and pelagic critters have treated you well. We have had the pleasure of fishing with quite a few PGFC members this year. After the last STRIKE magazine we had the blast of fishing the Exmouth billfish bonanza. Exmouth's second largest comp and Exmouth's biggest billfish only comp.



A hectic three day comp saw us raise 30 sailfish, hook 30 and land 29 of them. We won that comp with fantastic stats and moved on to the blue marlin season which we call our summer. The heavy tackle tournament held in December is a hotly contested comp with larger boats coming from all over the state to fish for the consistently largest marlin area in WA. Fine conditions paired with slow fishing saw us tag 4 blue marlin over 200kg, another win for "On Strike". A memorable tag on a big blue saw us run down sea at 12 knots for at least 5 minutes subduing and tagging a beast of a blue on 37kg line.

January and February resulted in so many Spanish mackerel and blue marlin it was epic! Catching a heap of monster Spaniards along the back of the reef and then popping out for some shots at XXL blue marlin was becoming routine, this place is mind blowing!

March saw GAMEX held and some tough fishing for all saw our crew tag a bunch of fish over 6 days but not enough to keep up the pace for a win.

The Chinese International Fishing Club (CIFIC) contacted me early in the year and decided to spend a week gracing me with their presence. The order of the first day was to catch a famous Exmouth blue marlin. After 40 minutes of trolling on 37kg gear the right rigger cracked into life and the reel screamed with a beast taken on a Pulsator lure on the other end. The angler tired fast and passed the rod to his mate, who soon then tired and passed the rod to the next, 4 anglers down and the rod was passed to me! Hang on a minute, I'm here to yell, not wind!

The rod duly went through the four of them again and unfortunately







the fish dived and tail wrapped. After a hard slog it surfaced and the decision was made to weigh the dead fish. The scales pulled down to 500lb. The CIFIC flew in a taxidermist so they could encapsulate the moment and have this great fish hung in the club rooms in Beijing. The biggest fish they have landed so far...

They asked to fish for the smaller black marlin the next day and I re-rigged the vessel with 24kg gear.

We were about to approach the 90 metre contour as a big fish piled onto the left corner

Pulsator lure again! An estimated 600lb black marlin smashed the lure off the surface and sizzled 50lb line into the sunset. The purpose of the day was to catch a smaller fish on the lighter gear, not a fish that outweighed the day's previous efforts! A battle ensued in which I refused to help with the rod work. 35 minutes later, 4 very tired Chinese anglers got the leader in range for me to take the wraps and finish her off. 600lb of marlin lay boat side for an obligatory photo and was released to fight another day. The rest of the week was spent avoiding large fish for the group.

April through to June saw amazing numbers of big GTs, Spanish mackerel and cobia. Red bass put in an appearance and yellowfin tuna were easy to score with on stick baits offshore.

Nick Lorenz and Ben Weston from the PGFC visited to get Nick his first billfish for his birthday present. One hour into the day we switched a feisty striped marlin off a lure and the fight was on. The spread was cleared and perfect weather saw us get on top of the fish quickly, with Nick enjoying his first billfish on a spin rod. Bad luck befell us and the circle hook pulled close to the boat after a fun battle. The spread was reset and another striped marlin climbed on that afternoon for a quick battle, photo and release. Absolute glass off conditions made the fishing quiet, but Nick caught an impressive wahoo of the right corner lure.

Yellowfin on stick baits were so common in the second half of the year that we chased other species just to get away from them.

We had similar issues with Spanish mackerel, with 25+ fish days common on stick baits and poppers, trolling got boring with this many fish around. Extremely visual fishing had these Spaniards exploding onto these lures and sky rocket vertically out of the water with two trebles embedded into their jaws, great fun.

It's coming up to Christmas again, and I am preparing for the billfish bonanza again this weekend, clients from Weipa have just arrived for an 8 day charter and I feel like that bad actor on Groundhog Day.

With 32 days straight fishing in front of me I'm strangely excited. I'm not dreading the workload at all. When will that next big bite come? What fish will it be? And what will it bite? Fishing is a drug, and I'm a long way down the path of addiction.

**See you soon ”**

*Capt Josh Bruynzeel*



All images by OnStrike Charters





# FISH EXMOUTH

IN STYLE - 30' SPORTSFISHER

Personalised Service-Award Winning

GAME  
SPORT  
REEF  
POP  
JIG  
FLY



ON STRIKE  
CHARTERS  
EXMOUTH WA



Phone JAE 0407 730 336  
JOSH 0458 136 848





# NORTHERN ADVENTURE

BY LUKE RYAN

Luke Ryan is as keen as any fishermen in the PGFC membership, whether he is at Cabo San Lucas in Mexico, the Rottneest Trench, Cervantes, the Abrolhos Islands, Exmouth or in this instance on a second trip to the Monte Bello Islands, followed by the Norwest Cape area. He, his trusty trailer boat "Simrad", a 6.8m Haines Hunter and camera are working hard to catch fish and record the events.

“

The Western Australian coastline offers some of the best sports fishing in the world along with some truly spectacular locations. March and April are the prime months to head north along the W.A coast in search of fishing adventures. Luke's preference is to make the run north during the new moon in search of anything big. The lead up to the new moon and spring tides generally means great fishing, more run - more fun! In 2016, the trip north was organised for the beginning of April with the intention of fishing two locations in a time frame of twelve days, three of which would be required for travel.

The logistics of the trip dictated that there was only room for two people, good friend and loud wooing mate, "Wooman", also sometimes known as Andrew, was to be company for the next twelve days. Known for making loud "wooing" noises when landing big fish, Wooman is quite handy on the deck of the boat.

The trip was to be a pure camping adventure, living out of swags and tents on remote islands off the coast. Only taking enough essentials to get by

*Continued page 20 >*



AFTA 2016 BEST IN SHOW

RICHTER LURES - SPLASH MEDIUM UV BLUE

VOTED BEST GAME FISHING LURE IN AUSTRALIA,  
PROUDLY OUR SECOND YEAR IN A ROW FOR THIS AWARD.



[WWW.RICHTERLURES.COM](http://WWW.RICHTERLURES.COM)







## Northern Adventure – by Luke Ryan (continued)

and limited by weight so much that they were only able to take one carton of beer between them for the first half of the trip.

The first stop was the Montebello Islands, a location that takes some serious preparation and planning to experience. Being so remote and with no facilities available, good preparation and readiness for any situation that presents itself, is essential.

Second stop for the trip would be the game fishing Mecca and world renown fishing hotspot, Exmouth. The plan, after finishing the leg to the Montes was to pack up camp and head south towards Exmouth exploring the many remote islands in the area. Venturing wide off the continental shelf in search of billfish was also on the cards.

Preparation of gear and the associated accessories took place over a number of weeks in the lead up to departure, double and triple checking to make sure that necessities had not been forgotten. A maintenance overhaul of the vessel took place to ensure any risks were minimized. The Simrad plotter was powered up a number of times to research the best places to stay and potential hazards.

Departure night came knocking and the excitement of the trip quickly became reality looking at the last set of traffic lights in the rear view mirror. It is a fair drive along the coastal road, roughly 1800km from Perth. The drive is possible in one solid hit but this time, the team opted to get a few hours rest at a suitable location early in the morning.

Entering the Pilbara it began to get hot, even the car's temperature gauge seemed to hover just over the red line during the midday heat. Luke had concerns about whether Wooman's car was even going to make it to the destination without a breakdown.

Arriving at Fortescue Roadhouse and putting over a thousand litres of fuel on the credit card, they were primed and ready to get the boat on the water. Launching near the Fortescue River mouth can be a task as there are no real

facilities, simply a gap between some mangroves and a pebble stone sloped bank, requiring spot on timing of a tidal river crossing.

Leaving the river mouth and setting the autopilot to the Montebellos they were on their way. The weather was perfect, a complete glass off, not a breath of wind for solid two hour run to cover the 46nm distance.

The islands were the site of three British nuclear weapons tests in the 1950s, although safe to visit now there are still signs warnings about the test sites. The decision was made to set up camp a fair distance away from the blast zones.

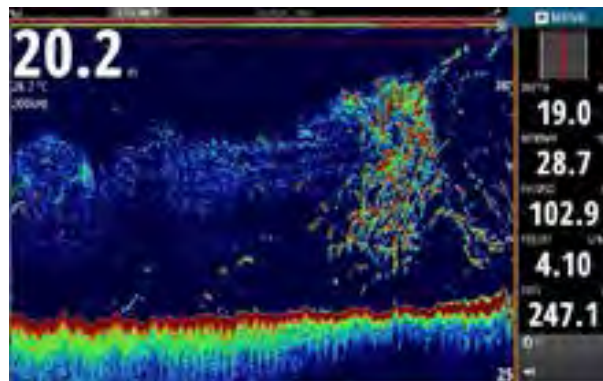
As the trip was being conducted over spring tides with an average of three metres of movement, it was essential to find a base camp where there was no chance of the fiberglass boat drying out. The selection of a perfect spot was made, tucked away in a private little bay with a sandy beach and enough space to set up tents and gazebo. The camp was simple, two tents, a gazebo, some deck chairs and a table sums it up.

Once set up, they headed out through the channel in the reef to check out a few of the breaks located close to camp. The weather was still a complete glass off. Heading out through the passage was one of those moments where you just have to take a step back and soak up what you're seeing. It was truly spectacular.

The target was GTs, known for frequenting the area. Wooman was first up and due to the conditions being so good and being able to position the boat close to the reef. He made a couple of long casts right into the money

zone. It seemed like nobody was home. One more cast before moving. Wooman was using a Nature Boys Surfsh with a slow rolling action, as he retrieved the lure a GT chased it right out of the wash smacking it a number of times before absolutely demolishing it. The fish wasn't anything huge, around the 15-17kg mark but the take was something special. The area was shallow so the fight was quite intense, manoeuvring the boat so as to keep the line angle right to draw the fish out. There was a fair amount of "wooning" going on once the fish was on the deck, a couple of pictures were taken then back into the water for someone else to catch another day.

This signalled the start of a fantastic afternoon, Luke managing to land a similar sized fish not too far from where Wooman got his. The water in these spots was really shallow so even though the fish weren't huge, considerable care needed to be taken when hooked up so







as not to get stuck in reef.

About half a mile behind the back of the reef a large commotion with big splashes and hundreds of birds smashing the water attracted them. The noise from the bust up was amazing, a rare sight with different species darting through and carving up the bait ball; tunas, mackerel and trevally all cooperating as a large school to devour the baitfish. The bust up was so thick that they turned the engine off and sat with the school of fish swarming around the boat.

Taking so much fuel was to allow the option of being able to explore further than previously. Luke had heard of a seamount located 40nm north of the island group, named Rankin Bank. Studying it on

charts and with tales from people who had been there, now was the chance to experience it first-hand.

Departing for Rankin Bank early the next morning, again in perfect weather, during the whole trip there were school upon school of flying fish breaking the surface creating further excitement. Within three miles of the seamount, the Simrad really started to light up. The amount of spots marked on the sounder increased rapidly to be too many to fish in one day!

First drop was on a ledge that looked absolutely loaded on the sounder. It was an instant double hook up in only twenty three metres of water clear enough to make out the ledges on the bottom. A double header of big coronation trout came up first, with each drop of jigs

resulting solid hook ups. Along with coronation trout were tons of other species hitting the jigs, including red bass and stunning bluefin trevally all on light PE2/3 outfits.

Moving out to deeper water on the northern side of the mount had wahoo buzzing the lures at the side of the boat. Dropping down some fast pitch style jigs in the hope of hooking one of these wahoo saw jigs smashed. With only mono above the hook, Luke was lucky to keep the angle and the line tight for the whole fight. The rest of the day was nothing but constant action on the jigs, yet the only fish not caught was a Rankin Cod!

Over the next three days the water turned green and the currents churned

*[Continued page 22>](#)*





## Northern Adventure – by Luke Ryan (continued)

up weed making the top water fishing almost impossible. Jigging was still good but there was only so much jigging to be had each day. After losing almost half of the jigs to sharks or bust-offs, the decision was made to call it quits and move on towards Exmouth.

Packing up camp and making the long drive back to shore and then onto Exmouth, it was a really long day, but arriving in Exmouth that afternoon hopes were high for the next five days of fishing.

They decided to base themselves on Serrurier Island, also known as Long Island, 30nm from the tip of the cape. There are a number of islands and exposed reefs close by that offer some fantastic fishing so there were plenty of options on where to fish. Over the years Luke has fished this area extensively and has hundreds of spots marked.

The water was a lot cleaner and the top water fishing was significantly better than the Montes, most of the islands fished were holding plenty of bait with predators following. Camping on Long Island was really awesome, literally waking up in the morning, hopping on the boat and fishing within five minutes. The weather continued to be very good.

The next few days were spent looking for GTs again, managing to work out a pattern of where the fish would be at certain times of the tide and noticing a lot of the fish hooked in super shallow, calm water. The majority of these were small and got the best of the anglers.

The last two days were spent looking for billfish. During March and April is when the waters off Exmouth get invaded with small black marlin the average size of which ranges from twenty to eighty kilos. As there were only two fishing, they limited the amount of rods in the water deciding to only run two at a time with two teasers. Relying heavily on the autopilot to keep the boat in the correct position whilst trolling, once hooking a fish they were able to get the gear in a lot quicker.

The morning of the last day was fantastic, it was a slightly overcast with a 10-15 knot wind chop. With high tide around midday they fished some canyons south of Tantabiddi having had success there in the past. Over the deep drop off a fish was up straight away smashing the long rigger, Luke was up first and started putting some hurt on. The marlin was only around 40kg but it put on a great show. The bite continued and in the space of ten minutes they had another four fish up on the lures, it was



madness, barely getting the line back into the outrigger before the rubber band popped and another fish was tail walking behind the boat. Raising six fish, hooking five and landing two for the day. A great way to end a trip.

Well and truly exhausted by

the end of the adventure, as much fun as these remote trips can be, a lot of effort goes into preparing for such a project. They are not easy by any means however by putting in the effort Luke and Andrew were rewarded well with a truly spectacular experience.

”

All images Luke Ryan







## IT'S TIME TO TAKE A GOOD SOFT LOOK AT YOUR FISHING HABITS

Halco Tackle are the new (and proud) owners of MadEyes Lures - a classic Australian tackle brand and maker of some of the best soft plastic lures on the planet. So whether you're an old-hand with soft plastics, or yet to discover their charms, when choosing the right tackle option in future, your decision is a little less hard.



[halcotackle.com](http://halcotackle.com)



[facebook.com/HalcoTackle](https://facebook.com/HalcoTackle)



[@halcotackle](https://www.instagram.com/halcotackle)



Respite from the strong easterly winds known to blow in the Pilbara in July and August made the first two days of the 2016 event delightful fishing around and offshore the beautiful Dampier Archipelago. PGFC member Dale Moir was invited to fish the Dampier Classic with Dave Levey and his son Jake on the boat "Ruffunuff" competing in the tag and release Billfish section.

# DAMPIER CLASSIC

DALE MOIR

“ Day one started with 10-15 knot easterly winds which is reasonable for Dampier in August. We hooked our first black marlin at 0730 but the hooks pulled after 10 minutes. On examination of the hook it was found to have straightened. An hour after recommencing trolling another good run turned out to be a 15kg wahoo, a good fish but not what we were chasing. Continuing trolling we eventually found a good bait school with birds, dolphins and even several whales circling around. Stopping, we filled the live bait tank and started a slow troll. Finally, raising several sails, we flicked two rigged livies into the spread. Both were quickly grabbed by sailfish while another sail attacked the floating garfish. A triple hook up with only two on board. As luck would have it, all three lines crossed

*Continued page 26 >*



Dale, Jake and Dave



# HOOK YOURSELF UP WITH



**TZ** **TIMEZERO**

by **MAXSEA**

TIMEZERO, the next generation of marine navigation software offers a revolutionary chart engine with a workspace exclusively dedicated for commercial fishing that allows for personalization of 2D/3D so accessing information that is most pertinent is shown first.

The Personal Bathymetric PBG Module enables the recording of one sounder point per second to produce ultra-precise 3D seafloor maps when linked with GPS and sounder.

The Sounder Module turns TIMEZERO into the essential fishing tool. Thanks to its full compatibility with Furuno Digital Filter (FDF™) fish finders, the sounder module allows you to enjoy all the advanced features of Furuno sounders directly on your PC.

**[www.maxsea.com](http://www.maxsea.com)**

**[info@maxsea.fr](mailto:info@maxsea.fr) - Tél : +33 559 43 81 00**



### *Dampier Classic (continued)*

resulting in three snapped lines. Deciding to drift more livies through the bait school, by late afternoon I finally hooked a 30kg black which was finally tagged. At the end of day one, only three billfish had been tagged by three boats – “The Wench”, “Reckless” and “Ruffnuff”.

On the second day, winds were 8-12 knot easterlies and dying off. Young Jake (10yrs) was to come out and fish for his first billfish, so out to the bait we headed. After trolling around for a while with no luck three livies were rigged. One of the rods finally started to peel off line, Jake picked it up and slowly set the circle hook, the fish jumped - a small black. Jake got set up in a gimbal belt and harness and the fight was on. Unfortunately, after 15 minutes, the hook pulled. Back to the bait ball and lines in again. Shortly after, a reel went off again and we could see a sailfish out the back, Jake set the circle hook and fought on, finally we got the fish alongside and tagged, great effort by Jake.

With lines back in we still had the bait ball to ourselves as the other boats were further out past the ships. We did not have to wait long before a rod started peeling line and, as Jake was resting, Dave grabbed it and was soon hooked up. I wound the other rod in but half way in a sail came and snatched the baitfish. We were on a double hook up and after a few issues both sails were tagged. By the end of the day we had three sailfish tagged. Two of the other boats tagged a single black

marlin each. Scores at end of Day two – “Ruffnuff”, one marlin and three sailfish giving 900 points, “The Wench” and “Reckless” had two marlin giving 600 points each. A total of seven marlin and three sailfish tagged after two days.

On the third day, Dave and I set off together as Jake was off to the FeNaCl fair with his mates, there was next to no wind as we headed out to the bait. To our dismay another boat was a short distance away and soon joined us followed by our main competitor “Wench” at the bait school. The struggle started, going fish for fish, including several lost fish. By 6 o'clock the “The Wench” had three marlin. We had a two marlin and a sailfish for the day. The point score by our reckoning was “The Wench” five marlin and 1500 points, “Ruffnuff” three marlin and four sailfish, giving us 1700 points. Roll on the final day. The total was 13 marlin and four sailfish tagged after three days.

On the fourth and final day, we awoke to howling easterly winds, 25 knots at 0500 and competition suspended before finally being cancelled at 1400 as winds hit 35-45 knots.

All in all a great comp for us winning Champion Boat T & R Billfish, Jake won small fry Champion T & R billfish and I won Champion Male T & R Billfish. ”

# all marine services

## CORPORATE & PRIVATE BOAT CARE

### Tel: 0408 866 292

Phone: 9433 2223

Fax: 9433 2224

PO Box 1607 Fremantle WA 6959

[www.allmarineservices.com.au](http://www.allmarineservices.com.au)

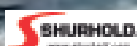
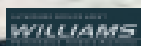
[allmarine@allmarineservices.com.au](mailto:allmarine@allmarineservices.com.au)

*“when quality counts”*

## Alexander J Scholz

### Mob: 0408 866 292

- Shipwright work
- Antifouling
- Polishing
- Detailing
- Gel repairs
- Tender servicing & repairs
- Painting
- Electronic sales & installations
- Holding tanks & plumbing
- General maintenance
- Boat furniture & accessories
- Watermaker sales, installation & service





# CARNARVON ISLANDS MISSION



The chance to explore new ground does not come often, Mick Campbell had twice before fished the area around the islands of Carnarvon, but this time was making a mission of it. From leaving Perth to arriving home just less than 64½ hours later, aided by perfect weather, Mick and co-adventurer Ben Pugh had an trip they won't be soon forgetting. The last paragraphs leave the reader understanding why they'll be going back. This is Mick's story of the trip.

“ With some good weather forecast for mid-week at both the Abrolhos and the Carnarvon area, the call was made for a trip north somewhere. With Ben Pugh able to snag a few days off and having never fished either location before, he was keen. Checking every forecast available we chose to head to the islands off Carnarvon - Dorre and Bernier. Having fished the islands a couple of times in the previous months, I knew just how hot the fishing there could be, and Beno was frothing to find out!

We started our journey north on Tuesday afternoon, driving through the night fueled by energy drinks, bags of sweets and fishing stories, arriving in Carnarvon just before sunrise. Quickly fueled and iced up it was straight to the boat ramp, launching the boat and heading out of the river with the sun rising. Glassed out conditions and not a breath of wind, THEY GOT THE FORECAST RIGHT!!

Zigzagging our way through pods of whales at 28 knots, we ran the 30 nautical miles to the strait between Dorre and Bernier Islands. Arriving at the gap we were greeted with an easy passage (anything over a two metre swell can get pretty nasty especially on a run out tide!).

Heading south down the west side of Dorre to some of the marks I had around 45m, we were greeted on arrival by large schools of bait holding good marks. The look on Beno's face said it all! Repositioning the boat right over a patch and dropping baits resulted in mine getting nailed within seconds by a nice mullet that swam off strongly when released. Beno then hooked up on something solid that stayed deep, it eventually came to the surface where a nice cobia was swum into the net.

Seeing a few more cobia around the boat, I tied on a big plastic hoping to

get interest from one. The jig made it all the way to the bottom, but while quickly recovering it, it was crunched just under the boat. After a big flash of colour as the fish screamed off on a run, we eventually got a glimpse of a mackerel with a plastic hanging out of its mouth. Following a few anxious circles of the boat Beno slipped the gaff into the 24kg fish, lucky to be landed on mono leader. After a few photos the fish was trunked and put on ice, destined for the smoker.

In the meantime, Beno was hooked up to a stubborn fish that just didn't want to come up, it wasn't long before he got a bit of colour and could see a nice Red Emperor. It went into the net and a very happy Beno weighed it at 8.5kgs – it was his new PB – not bad for our first hour fishing and on a spot that usually only produces Rankin cod!

The next drift resulted in Beno landing a

*Continued page 28 >*





### Carnarvon Islands Mission (continued)

Rankin Cod and myself getting sharked on a mullo way. Within minutes 5 or 6 sharks were circling the boat including a couple of 3 metre bull sharks. In with the sharks was a couple of cobia eating the scraps at the back of the boat. I couldn't resist so I flicked my jig over the side where it was engulfed on the drop. After a strong fight a Cobia was landed and a released. It's amazing how the sharks never seem to attack Cobia (Oh yes they do. Ed).

The call was made to move on and try to lose the sharks, heading out a bit wider to the 60's, hopefully to find some more red emperor.

The fishing went quiet with only a few spangled emperor and other less desirables, so we headed north up the coast of Bernier Island to get in close to the cliffs and try for some trout and baldies on plastics in the washes. Even that was quiet with Spanish flag and small Emperors becoming annoying.

By this stage the day was getting away from us so the decision was made for an afternoon back out in the 60's where we found a bit more action, Beno starting things off with a double header of good Rankin's. I then hooked up solid to a fish that headed straight up. We both correctly called it for another Cobia. This one was a bit bigger than the others at just over 19kg. The next few drifts resulted in a couple of tasty pearl perch and suspected big reds which were sharked. That was the story the rest of the afternoon, every spot we tried we were hooking big reds and getting sharked!

With the sun setting it was time to head back through the gap between the islands and find an anchorage for the night on the east side of Dorre Island. But wait, a couple of miles from the gap we encountered big schools of tuna busting up, so a few casts resulted in a couple of striped tuna, good fresh bait for the morning.

Larger tuna appeared coming right out of the water feeding on tiny bait, a few casts later I hooked up to one that took off. Working him up bit by bit with a little under gunned 3000-sized spin reel, we got a glimpse as it did it circled under the boat. It turned out to be a yellowfin tuna around the 10kg mark. Finally within range for a gaff shot its one last dive under



the boat resulted in straightening the treble on the lure!!! Time to call it a day.

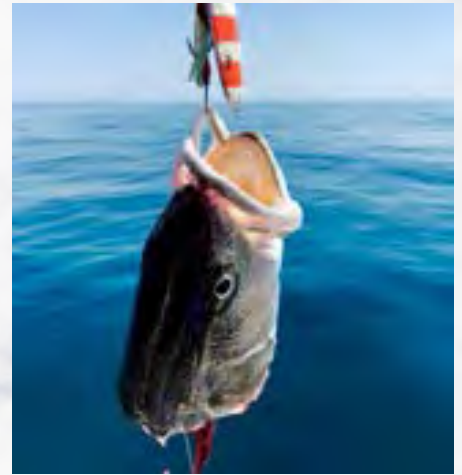
Set up for the night in a great little cove we kicked back with a few beers, cooked up a feed and rolled the swags out on deck. It didn't take long to fall asleep after not getting any the night before.

Up early and after a coffee we were greeted with a beautiful sunrise and glass out conditions again. Heading to the 60's in search of reds again. On arrival the sounder showed some good marks away from the lump, got to be reds we were thinking. Out came a couple of big strips of stripy and down they went. I was first to hook up on a big fish that was hard to turn, I finally I got him coming up when 30 metres from the boat I

**Within minutes 5 or 6 sharks were circling the boat including a couple of 3 metre bull sharks**







## I hear Beno yell out 'marlin!' and looked over to see a 60-70kg black marlin...



The next few drifts resulted in us both hooking solid fish only to get sharked, so we moved on trying a bit of new ground we came across in the 40's on our way south. It didn't take Beno long and he was onto another red and then followed it up with a pink snapper whilst I continued to get sharked!! Not my trip.

Moving again, this time heading south of the gap for one last shot before we had to head back to the mainland ahead of the forecast south westerly. Arriving at the mark the sounder lit up with bait

was no expectation of marlin in 23° water, but with so much bait and tuna around, anything is obviously possible.

I have encountered sailfish there in the last couple of months and will definitely be heading back on a dedicated game fishing mission when the water heats up.

A few more drops on the spot resulted in a few more mulloway and pink snapper on the jigs.

With the sou'wester starting to puff we turned back towards the gap and the mainland. On the way to the gap the sight of mackerel getting airborne on a bait ball was too much, so a few casts resulted in a big shark mackerel for Beno and a nice broad-barred mackerel for me. Another one for the smoker.

Then it was through the gap and pointing for home, sitting on 30 knots the whole way back, again zigzagging through pods of whales and into the Gascoyne River. With the boat on the trailer and then heading for home, we arrived back in Perth on Friday morning, a little tired and sore but more than willing to do all again.

**Mission accomplished. Thanks to Ben Pugh for a great trip and well done on your PB Red Emperor. ”**

experienced that terrible feeling of being sharked.

It was then Beno's turn, imagining a big red sucking away on his bait he waited for it to load up, which it did but didn't want to move. Beno got it turned and heading the right way. Knowing there were sharks around he was looking a bit nervous. Out of the depths came a flash of colour, it was a good one so "wind like a mad man" was the call!! He did and we slipped the net under a beautiful 9.5kg Red Emperor, he'd beaten his previous days PB.

and a few good marks. First drop and I hooked up on a fish, which turned out to be a mulloway. This one was kept.

Whilst I was hanging it over the side bleeding the mulloway, I hear Beno yell out 'marlin!' and looked over to see a 60-70kg black marlin all lit-up swimming around the boat. We scramble to get the teasers out, Beno grabs the wheel and we quickly run a spread on the game gear. After half an hour or so working the area – no sign of it: would have loved to have a live bait handy, I could've hand fed it. This was amazing to see, as there





# TIDE TABLES 2017

AUSTRALIA, WEST COAST - FREMANTLE  
TIME ZONE - 0800

## JANUARY

Time	m	Time	m	Time	m	Time	m
1 0706	0.46	9 0427	0.48	17 0631	0.57	25 0503	0.49
SU 2232	1.03	MO 1925	1.11	TU 2239	0.87	WE 1958	1.09
2 0726	0.49	10 0503	0.41	18 0633	0.57	26 0515	0.47
MO 2258	0.98	TU 2003	1.14	WE 2053	0.85	TH 2030	1.10
3 0737	0.52	11 0541	0.37	19 0648	0.57	27 0529	0.46
TU 2323	0.93	WE 2042	1.15	TH 1742	0.85	FR 2102	1.10
4 0739	0.56	12 0617	0.36	20 0659	0.58	28 0548	0.46
WE 2129	0.86	TH 2119	1.13	FR 1802	0.90	SA 2134	1.09
5 0739	0.59	13 0648	0.38	21 0622	0.58	29 0609	0.47
TH 1758	0.85	FR 2152	1.09	SA 1822	0.95	SU 2204	1.05
6 0744	0.61	14 0713	0.42	22 0541	0.57	30 0628	0.49
FR 1807	0.91	SA 2209	1.03	SU 1842	0.99	MO 1537	0.74
7 0623	0.62	15 0731	0.48	23 0456	0.55	21 1622	0.72
SA 1823	0.98	SU 2214	0.97	MO 1903	1.03	TU 2254	0.94
8 0356	0.56	16 0724	0.54	24 0454	0.52		
SU 1850	1.05	MO 2225	0.92	TU 1928	1.06		

## FEBRUARY

Time	m	Time	m	Time	m	Time	m
1 0643	0.56	9 0523	0.42	17 0602	0.60	25 0442	0.51
WE 1405	0.81	TH 2041	1.11	FR 1425	0.90	SA 1128	0.77
2 0636	0.59	10 0551	0.44	18 0558	0.60	26 0502	0.52
TH 1443	0.85	FR 2118	1.09	SA 1505	0.92	SU 1129	0.79
3 0638	0.61	11 0559	0.48	19 0510	0.60	27 0522	0.55
FR 1525	0.89	SA 2150	1.04	SU 1558	0.95	MO 1148	0.81
4 0617	0.61	12 0602	0.52	20 0456	0.59	28 0539	0.58
SA 1613	0.95	SU 2207	0.98	MO 1708	0.97	TU 1216	0.85
5 0508	0.57	13 0605	0.57	21 0402	0.57	29 0605	0.71
SU 1714	1.00	MO 1247	0.77	TU 1823	1.01	2232	0.94
6 0338	0.50	14 0543	0.59	22 0410	0.55		
MO 1823	1.05	TU 1303	0.80	WE 1907	1.04		
7 0413	0.45	15 0534	0.60	23 0418	0.53		
TU 1915	1.10	WE 1325	0.83	TH 1945	1.07		
8 0449	0.42	16 0548	0.60	24 0427	0.52		
WE 2000	1.12	TH 1353	0.87	FR 2022	1.08		

## MARCH

Time	m	Time	m	Time	m	Time	m
1 0542	0.62	9 0416	0.51	17 0451	0.67	25 0331	0.60
WE 1247	0.89	TH 1958	1.06	FR 1132	0.99	SA 1037	0.85
2 0523	0.65	10 0437	0.54	18 0446	0.67	26 0348	0.61
TH 1319	0.92	FR 2039	1.05	SA 1200	1.01	SU 1019	0.88
3 0524	0.66	11 0429	0.57	19 0411	0.66	27 0407	0.64
FR 1354	0.96	SA 1107	0.81	SU 1231	1.02	MO 1035	0.92
4 0445	0.65	12 0437	0.61	20 0225	0.66	28 0423	0.67
SA 1433	0.98	SU 1120	0.84	MO 1307	1.01	TU 1100	0.96
5 0156	0.59	13 0447	0.64	21 0241	0.64	29 0420	0.71
SU 1519	1.01	MO 1135	0.87	TU 1524	1.00	WE 1129	1.01
6 0231	0.54	14 0430	0.66	22 0258	0.62	30 0006	0.87
MO 1616	1.02	TU 1148	0.90	WE 1649	1.01	TH 0359	0.73
7 0307	0.51	15 0419	0.66	23 0310	0.61	31 0102	0.80
TU 1734	1.04	WE 1202	0.93	TH 1821	1.03	FR 0402	0.74
8 0343	0.50	16 0435	0.66	24 0318	0.60	2109	0.67
WE 1911	1.06	TH 1117	0.96	FR 1923	1.05		
		2243	0.79				

## APRIL

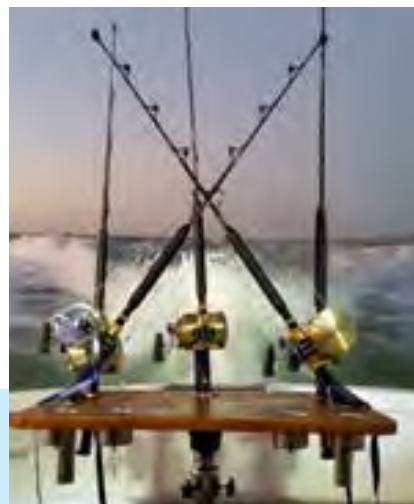
Time	m	Time	m	Time	m	Time	m
1 0201	0.72	9 0317	0.71	17 0306	0.74	25 0253	0.77
SA 0317	0.72	SU 1007	0.95	MO 1155	1.12	TU 0933	1.08
2 0035	0.62	10 0325	0.74	18 0120	0.71	26 0249	0.80
SU 1350	1.09	MO 1020	0.98	TU 1226	1.10	WE 0959	1.13
3 0118	0.58	11 0246	0.75	19 0144	0.70	27 0240	0.82
MO 1225	1.07	TU 1027	1.02	WE 1301	1.08	TH 1023	1.18
4 0157	0.57	12 0258	0.75	20 0201	0.69	28 1038	1.20
TU 1533	1.05	WE 1014	1.05	TH 1348	1.05	FR 1955	0.63
5 0234	0.58	13 0319	0.75	21 0207	0.69	29 1051	1.21
WE 1636	1.02	TH 1014	1.09	FR 1658	1.03	SA 2059	0.62
6 0307	0.61	14 0011	0.81	22 0210	0.70	30 1108	1.20
TH 1857	1.01	FR 0337	0.75	SA 1009	0.95	SU 2354	0.62
7 0326	0.65	15 0054	0.78	23 0223	0.71		
FR 1117	0.89	SA 0328	0.75	SU 0901	0.98		
8 0312	0.69	16 0305	0.74	24 0240	0.74		
SA 0956	0.91	SU 1127	1.13	MO 0911	1.03		
SA 1443	0.83			MO 1507	0.81		
2035	0.98			2110	0.99		

## MAY

Time	m	Time	m	Time	m	Time	m
1 1128 1.17 MO		9 0114 0.82 0857 1.13 TU 1620 0.78 2228 0.89		17 1159 1.17 2249 0.74 WE		25 0119 0.87 0906 1.27 TH 1745 0.65 2348 0.87	
2 0044 0.62 1153 1.13 TU		10 0138 0.82 0900 1.16 WE 1658 0.75 2130 0.87		18 1232 1.13 2332 0.76 TH		26 0109 0.86 0936 1.30 FR 1857 0.61	
3 0125 0.64 1221 1.08 WE		11 0205 0.82 0915 1.19 TH 1739 0.73 2350 0.85		19 1309 1.09 FR		27 1006 1.31 1954 0.59 SA	
4 0201 0.69 1546 1.01 TH		12 0228 0.82 0938 1.21 FR 1850 0.72		20 0008 0.77 1358 1.03 SA		28 1032 1.29 2045 0.61 SU	
5 0227 0.74 1028 0.99 FR		13 1004 1.22 1956 0.71 SA		21 0038 0.79 0751 1.04 SU 1258 0.96 1746 0.98		29 1049 1.24 2140 0.65 MO	
6 0200 0.79 0847 1.00 SA 1509 0.91 1929 0.94		14 1032 1.22 2041 0.71 SU		22 0104 0.81 0755 1.09 MO 1438 0.88 2003 0.95		30 1105 1.19 TU	
7 0148 0.81 0852 1.04 SU 1508 0.86 2041 0.92		15 1100 1.21 2124 0.72 MO		23 0123 0.84 0813 1.16 TU 1537 0.79 2141 0.93		31 0011 0.68 1126 1.13 WE	
8 0134 0.83 0859 1.09 MO 1543 0.82 2141 0.91		16 1129 1.19 2206 0.73 TU		24 0132 0.86 0837 1.22 WE 1635 0.71 2247 0.90			

## JUNE

Time	m	Time	m	Time	m	Time	m
1 0056	0.74	9 0116	0.85	17 1245	1.06	25 1001	1.31
TH 1151	1.08	FR 0846	1.26	SA 2259	0.81	SU 1944	0.57
2 0130	0.79	10 0914	1.27	18 0654	1.02	26 1044	1.26
FR 1207	1.02	SA 1852	0.69	19 1154	0.99	MO 2025	0.61
3 0755	1.03	11 0944	1.26	20 0651	1.08	27 1055	1.20
SA 2123	0.86	SU 1929	0.69	MO 2148	0.86	TU 2101	0.67
4 0745	1.08	12 1013	1.25	21 0730	1.22	28 1051	1.13
SU 2209	0.86	MO 2005	0.70	WE 1636	0.72	TH 2127	0.73
5 0753	1.12	13 1044	1.23	22 0803	1.28	29 1105	1.07
MO 1710	0.84	TU 2040	0.71	TH 1723	0.64	30 0025	0.80
6 0757	1.17	14 1113	1.20	23 0840	1.32	1123	1.02
TU 1719	0.80	WE 2117	0.73	FR 1812	0.59	FR 1928	0.80
7 0806	1.20	15 1142	1.16				
WE 1717	0.77	TH 2154	0.75				
8 0041	0.85	16 1213	1.12	24 0919	1.33		
TH 0823	1.23	FR 2228	0.78	SA 1859	0.56		
TH 1735	0.73						
2329	0.86						



© Copyright Commonwealth of Australia 2015, Bureau of Meteorology  
Datum of Predictions is Chart Datum

Moon Phase Symbols ● New Moon ○ First Quarter ○ Full Moon ● Last Quarter



LAT 32° 03' S LONG 115° 44' E  
TIMES AND HEIGHTS OF HIGH AND LOW WATERS



Government of Western Australia  
Department of Transport

Tide Tables have been kindly provided by the Government of Western Australia, Department of Transport

The Bureau of Meteorology gives no warranty of any kind whether express, implied, statutory or otherwise in respect to the availability, accuracy, currency, completeness, quality or reliability of the information or that the information will be fit for any particular purpose or will not infringe any third party Intellectual Property rights.

The Bureau's liability for any loss, damage, cost or expense resulting from use of, or reliance on, the information is entirely excluded.



JULY							
Time	m	Time	m	Time	m	Time	m
1 0916	1.01	9 0902	1.24	17 0503	1.00	25 1045	1.16
1945	0.80	1828	0.65	1952	0.79	1949	0.62
SA		SU		MO		TU	
2 0643	1.03	10 0934	1.23	18 0538	1.06	26 1115	1.09
2003	0.79	1852	0.65	1530	0.77	2005	0.68
SU		MO		TU		WE	
3 0654	1.08	11 1006	1.21	19 0618	1.13	27 0227	0.81
1845	0.79	1911	0.67	1600	0.68	1040	0.87
MO		TU		WE		TH	1857 0.74
4 0707	1.12	12 1035	1.18	20 0701	1.19	28 0215	0.84
1726	0.77	1926	0.68	1638	0.61	0433	0.83
TU		WE		TH		FR	1823 0.74
5 0720	1.16	13 1103	1.14	21 0744	1.24	29 0237	0.88
1716	0.74	1937	0.71	1720	0.56	0849	0.92
WE		TH		FR		SA	1836 0.73
6 0738	1.19	14 0222	0.86	22 0830	1.26	30 0452	0.92
1722	0.71	0321	0.86	1602	0.53	1852	0.72
TH		FR	1131 1.09	SA		SU	
7 0802	1.22	15 1157	1.02	23 0916	1.25	31 0419	0.96
1735	0.68	1942	0.76	1844	0.54	1843	0.72
FR		SA		SU		MO	
8 0831	1.23	16 0520	0.94	24 1001	1.22		
1800	0.66	1219	0.95	1921	0.57		
SA		SU	1947 0.78	MO			

SEPTEMBER							
Time	m	Time	m	Time	m	Time	m
1 0558	0.97	9 0006	0.85	17 0744	0.99	25 1538	0.63
1538	0.60	0443	0.66	1604	0.52	2327	0.94
FR		SA	1056 0.84	SU	2242 0.74	MO	
2 0659	0.99	10 0038	0.88	18 0124	0.73	26 1535	0.62
1546	0.58	0541	0.67	1602	0.56		
SA		SU	2348 0.91	MO	2225 0.75	TU	
3 0739	1.02	11 0625	0.67	19 0241	0.69	27 0000	0.93
1559	0.57	MO		TU	0919 0.96	WE	1348 0.60
SU	2259 0.75			1613	0.59		
4 0044	0.74	12 0154	0.93	20 0333	0.66	28 0036	0.92
0815	1.03	1323	0.60	1004	0.91	1412	0.58
MO	1616 0.57	TU		WE	1627 0.81	TH	
2242 0.76				2258	0.81		
5 0138	0.72	13 0245	0.95	21 0409	0.64	29 0117	0.90
0852	1.03	1358	0.54	1046	0.86	1430	0.57
TU	1636 0.58	WE		TH	1603 0.65		
2250 0.77				2310	0.84		
6 0223	0.69	14 0340	0.96	22 0436	0.63	30 0418	0.88
0928	1.01	TH	1434 0.51	FR	1128 0.80	1442	0.56
WE	1656 0.60			1545	0.65	SA	
2310 0.80				2228	0.87		
7 0307	0.67	15 0446	0.97	23 0505	0.63		
1002	0.97	FR	1509 0.49	SA	1209 0.74		
TH	1710 0.62			1602	0.64		
2336 0.82				2233	0.90		
8 0353	0.66	16 0642	0.98	24 0541	0.63		
1034	0.91	SA	1542 0.50	SU	1040 0.70		
FR	1709 0.65			1615	0.64		
				2257	0.93		

NOVEMBER							
Time	m	Time	m	Time	m	Time	m
1 0200	0.69	9 1205	0.45	17 0416	0.54	25 1007	0.55
0757	0.81	TH	2325 0.96	FR	1044 0.69	SA	2355 0.92
WE	1403 0.61			FR	1304 0.66		
2026 0.89				2030	0.51		
2 0258	0.63	10 1254	0.47	18 0454	0.51	26 1050	0.57
0910	0.80	FR	2351 0.90	SA	1124 0.68	SU	
TH	1413 0.64			SA	1333 0.65		
2043 0.94				2048	1.03		
3 0347	0.56	11 1333	0.51	19 0534	0.49	27 0024	0.87
1017	0.77	SA		SU	2109 1.05	MO	1128 0.59
FR	1417 0.66					2119	0.84
2103 0.98							
4 0439	0.50	12 0323	0.81	20 0615	0.48	28 1200	0.62
1115	0.74	SA	1402 0.57	MO	2134 1.05	TU	1927 0.87
SA	1417 0.68	SU	2139 0.82				
2124 1.03							
5 0536	0.46	13 0256	0.74	21 0702	0.48	29 1226	0.64
2146	1.05	MO	0431 0.75	TU	2202 1.04	WE	1928 0.92
SU			1328 0.62				
			2008 0.84				
6 0656	0.43	14 0329	0.69	22 0755	0.49	30 0309	0.66
2210	1.06	TU	0754 0.72	WE	2230 1.02	TH	0818 0.71
MO			1316 0.65			1246	0.67
			2016 0.89			1942	0.98
7 0813	0.42	15 0338	0.63	23 0840	0.51		
2235	1.05	WE	0908 0.71	TH	2259 0.99		
TU			1303 0.67				
			2020 0.93				
8 0912	0.43	16 0343	0.59	24 0924	0.53		
2300	1.01	TH	1001 0.70	FR	2327 0.96		
WE			1237 0.67				
			2019 0.97				

AUGUST							
Time	m	Time	m	Time	m	Time	m
1 0554	1.00	9 1001	1.11	17 0530	1.06	25 0038	0.82
1741	0.71	1811	0.63	1539	0.56	0419	0.72
TU		WE		TH		FR	1031 0.87
2 0622	1.04	10 0026	0.81	18 0644	1.10	26 0100	0.85
1643	0.69	TH	0332 0.75	FR	1616 0.52	SA	1722 0.67
WE			1826 0.65			SA	2330 0.88
3 0651	1.08	11 0056	0.83	19 0740	1.13	27 1736	0.66
1639	0.67	FR	0415 0.76	SA	1654 0.51	SU	
TH			1831 0.68				
4 0719	1.11	12 0130	0.86	20 0829	1.14	28 1055	0.90
1646	0.64	SA	0504 0.78	SU	1728 0.52	MO	1703 0.66
FR			1826 0.70				
5 0750	1.13	13 0208	0.89	21 0914	1.12	29 0040	0.93
1657	0.62	SU	0536 0.80	MO	1746 0.55	TU	1643 0.65
SA			1828 0.72				
6 0823	1.15	14 0248	0.93	22 0151	0.73	30 0323	0.93
1713	0.61	MO	1829 0.72	TU	0958 1.07	WE	1513 0.64
SU	2346 0.78				1747 0.60		
7 0124	0.77	15 0332	0.97	23 1038	1.01	31 0426	0.94
0856	1.15	MO	1432 0.69	WE	1756 0.65	TH	1526 0.61
MO	1733 0.78						
8 0210	0.76	16 0425	1.01	24 0021	0.79		
0929	1.14	WE	1503 0.62	TH	0330 0.71		
TU	1752 0.61				1742 0.68		

OCTOBER							
Time	m	Time	m	Time	m	Time	m
1 0606	0.89	9 0814	0.54	17 0229	0.67	25 1219	0.58
1451	0.56	MO	2303 0.98	TU	0843 0.83	WE	1219 0.58
SU	2242 0.76			TU	1451 0.61		
2 0019	0.76	10 0931	0.52	18 0936	0.81	26 1252	0.57
0718	0.91	TU	2329 0.98	WE	1459 0.64	TH	2356 0.93
MO	1502 0.56				2127 0.87		
2128 0.77							
3 0115	0.72	11 1245	0.49	19 0356	0.59	27 1114	0.57
0806	0.92	WE	2357 0.95	TH	1023 0.78	FR	
TU	1519 0.57			TH	1415 0.65		
2128 0.79					2117 0.90		
4 0206	0.67	12 1327	0.47	20 0434	0.56	28 0028	0.90
0851	0.91	TH		FR	1106 0.74	SA	1333 0.57
WE	1535 0.59				1427 0.65		
2142 0.83					2123 0.94		
5 0301	0.63	13 0302	0.91	21 0508	0.55	29 0105	0.86
0943	0.88	FR	1404 0.47	SA	1145 0.70	SU	1330 0.57
TH	1543 0.62				1448 0.64		
2200 0.87					2138 0.96		
6 0358	0.59	14 0405	0.88	22 0536	0.54	30 0421	0.82
1049	0.84	SA	1437 0.50	SU	1224 0.67	MO	1333 0.58
FR	1535 0.65				1503 0.64		
2214 0.90					2159 0.98		
7 0453	0.56	15 0640	0.86	23 0602	0.54	31 0053	0.75
1151	0.78	SU	1500 0.54	MO	1225 0.99	TU	0633 0.81
SA	1533 0.66					TU	1349 0.59
2224 0.94						2017	0.84
8 0551	0.55	16 0118	0.73	24 0632	0.55		
1247	0.72	MO	0747 0.85	TU	2255 0.98		
SU	1536 0.66						
2241 0.97							

DECEMBER							
Time	m	Time	m	Time	m	Time	m
1 0336 0950 FR 1255 2004	0.57 0.71 0.69 1.05	9 1217 2316 SA	0.54 0.88	17 0533 2027 SU	0.48 1.09	25 0759 2148 MO	0.57 0.87
2 0421 1054 SA 1238 2031	0.49 0.70 0.70 1.10	10 1037 2108 SU	0.59 0.86	18 0555 2052 MO	0.46 1.09	26 0810 1844 TU	0.60 0.86
3 0513 2100 SU	0.42 1.13	11 0806 1926 MO	0.63 0.86	19 0623 2120 TU	0.45 1.09	27 0818 1836 WE	0.62 0.91
4 0612 2128 MO	0.37 1.14	12 0819 1923 TU	0.63 0.91	20 0650 2150 WE	0.45 1.07	28 0813 1844 TH	0.64 0.98
5 0709 2157 TU	0.35 1.12	13 0603 1933 WE	0.62 0.96	21 0709 2218 TH	0.46 1.05	29 0413 1906 FR	0.59 1.05
6 0801 2221 WE	0.36 1.08	14 0456 1939 TH	0.58 1.00	22 0721 2244 FR	0.48 1.01	30 0430 1938 SA	0.50 1.11
7 0848 2241 TH	0.40 1.02	15 0513 1948 FR	0.54 1.04	23 0734 2310 SA	0.51 0.97	31 0501 2013 SU	0.42 1.16
8 0931 2300 FR	0.46 0.95	16 0525 2005 SA	0.51 1.07	24 0747 2334 SU	0.54 0.92		



## KEY



1 Hillarys Yacht Club  
S 31° 54'  
E 115° 12'

**FURUNO®**

2 Furuno  
S 31° 58'  
E 115° 16'



3 Perth Game Fishing  
S 32° 00'  
E 115° 14'



4 Club Marine  
S 32° 03'  
E 115° 20'



5 Fremantle Sailing Club  
S 32° 05'  
E 115° 11'

**all marine services**  
CORPORATE & PRIVATE BOAT CARE  
Tel: 0408 866 292

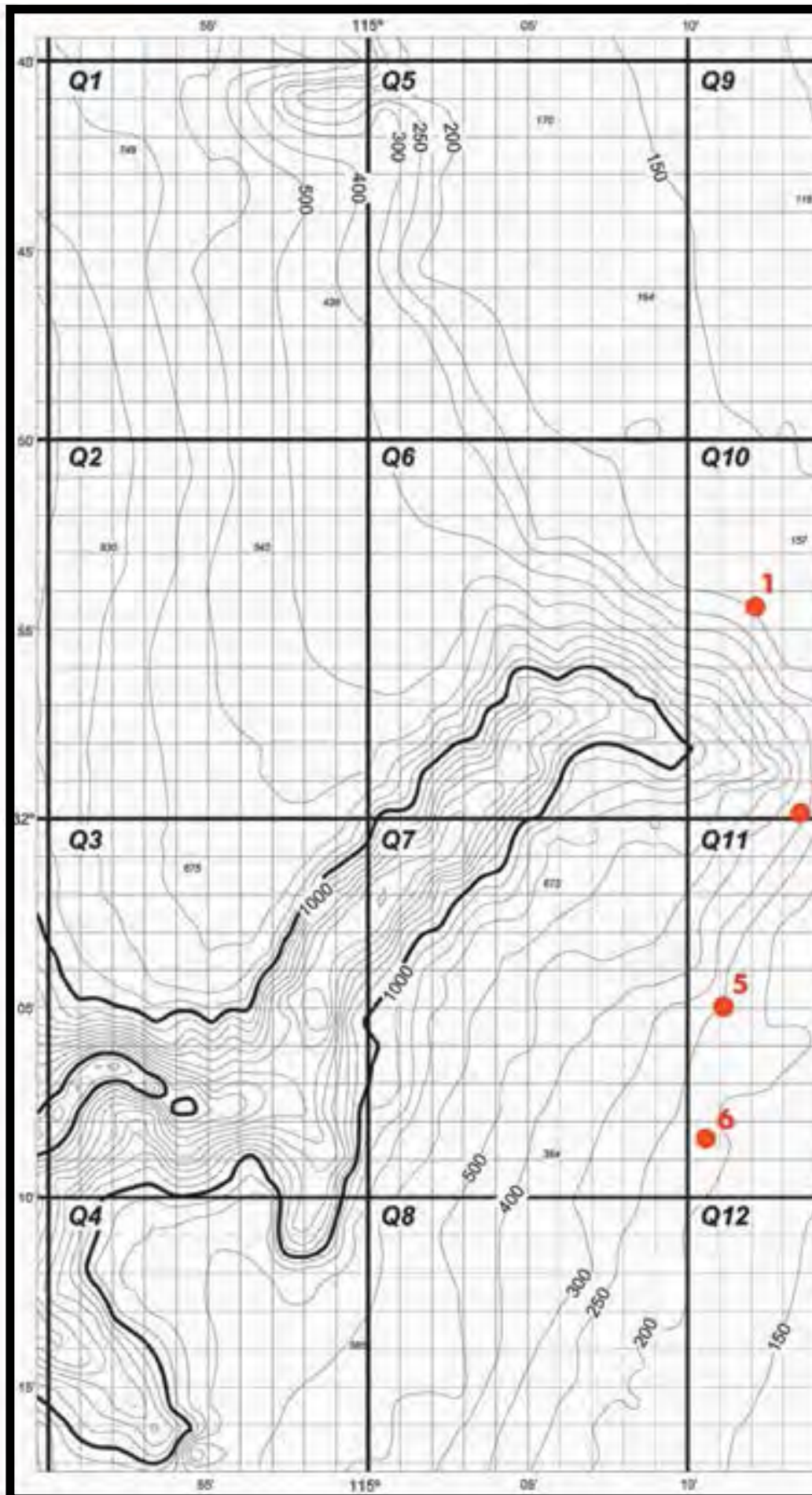
6 All Marine Services  
S 32° 09'  
E 115° 11'



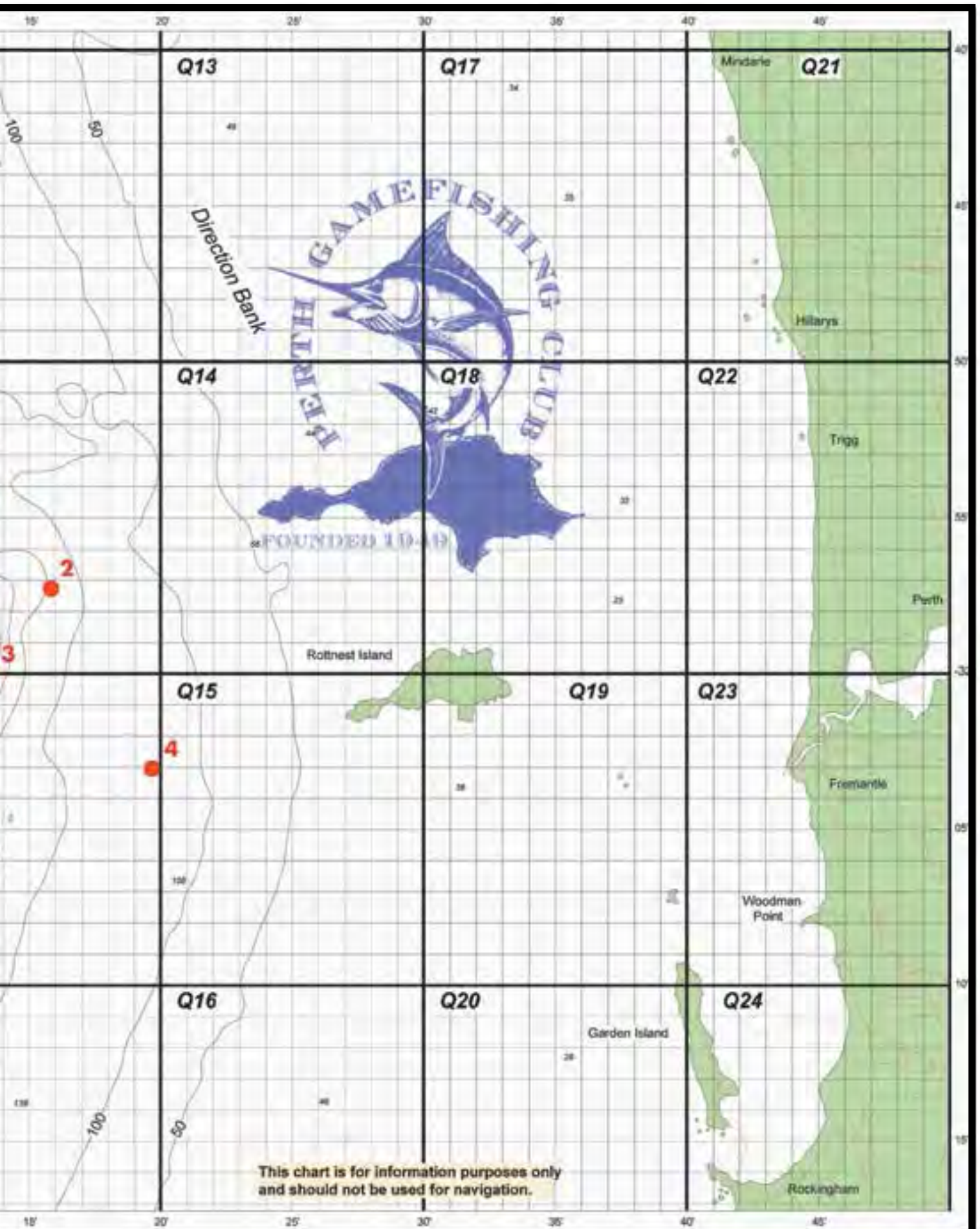
**TAFE** South  
Metropolitan  
www.tafe.wa.gov.au



Department of  
Sport and Recreation









# 2016 FAD SEASON

## TWO DRIFTERS AND A NEAR MISS!

Perth Game Fishing Club has been responsible for the current “recoverable” FAD program at the Rottnest Trench since 1998. The FADs are deployed in November of each year and recovered in May the following year for refurbishment. Club volunteers are responsible for the entire program. In 2015 the club implemented a checking program, with volunteer members diving to check the integrity of the connection between the top mooring chain and the top rope, a connection which has featured in a disproportionate number of losses.



During the 2016 season, PGFC experienced a breakaway FAD shortly after deployment. Being fitted with a satellite tracker the club was able to keep tracks on the FAD and recover it at what turned out to be the first opportune moment.

The FSC FAD, which was deployed at the Rottnest Trench on 9th November 2015 along with 5 others, broke loose within 24 hours of its positioning and drifted in a south-westerly direction on strong currents directly into the wind.

At that time, recovery was unable to be effected as very high winds were being experienced. Within a very short time it had drifted out of range of economic recovery.

Thereafter, it travelled northwards, did a couple of loops off Guilderton, all the time teasingly appearing to head inshore and southward, before moving out to 80nm offshore and picking up a current taking it towards the southern group of the Abrolhos Islands.



PGFC would like to acknowledge the assistance of Darren McCagh, skipper of the recovery vessel, Chad and Bill Mills of Blue Lightning Charters along with Randall Brehaut and Peter Berryman of Geraldton and Districts Offshore Fishing Club.







Whilst the FAD tracked to within 25nm of land a couple of times, the chances of recovery were frustrated by the lack of suitable launching facilities for a trailer boat big enough for recovery or the proximity to port for a commercial vessel.

With the support of MaxSea current charts the drift could be predicted to a reasonable extent. As it neared Wreck Point at the southern tip of the Abrolhos Group, it became obvious that the next 24 hours would present the best opportunity to grab it. With the aid of Geraldton based cray fisherman Darren McCagh it was secured and taken to his home port.

As it turned out, the FAD float fitted perfectly into the pot tipper on the boat.

Unsure of when and whether the FAD would be recovered, a replacement was deployed on 2nd December.

A footnote to this event is that when all the FADs were recovered in May 2016, the mooring gear from the original FSC FAD was recovered tangled with the replacement FAD's mooring.

All other FADs including the replacement remained in their deployment positions with the exception of a brief sojourn by the All Marine Services FAD which on 10th January went adrift as a result of a mooring rope chafing through on a sharp object on the sea bed. The problem was recognised within 12 hours and the FAD recovered by Life Member John Webber's "Mojo" just 7 miles south of it deployed position. The FAD was redeployed within a few days using Life Member Rhyss Whittred's Wellcraft "Ashram".

A near miss occurred when the replacement FSC FAD shackle pin nearly came adrift and was reported by amateur divers. Long story short, Rhyss Whittred and Shane Anderson wrestled with the float and hammered the pin home before spinning up the spare nut and installing the locking split pin. The job was completed on a Sunday afternoon, not before experiencing a bruising from the 50kg counterweight hanging on the bottom of the FAD.

Since fitting all FADs with tracking devices in 2013, there has only been one total loss in 25 deployments, this compares with as many as 5 in a season prior to using trackers. The recovery of errant FADs has reduced speculation around the cause and enabled better understanding of losses, which in turn has led to design modifications improving FAD endurance in what can be a tough environment.

Breakaway FADs with trackers installed have always been rescued within easy reach of Hillarys, Fremantle or Mandurah and mostly within a couple of days. In earlier, pre-tracker times, floats had been found as distant as Marawah in NW Tasmania and the Abrolhos Islands. Many were never seen again.

The Rottne FAD program has developed into a community service on the part of PGFC and the FAD sponsors. The program receives operational support from the South Metropolitan TAFE, Royal Perth Yacht Club and Cockburn Power Boat Association. Apart from the generosity of our naming rights sponsors, listed at left, financial assistance comes from Recfishwest, The Department of Sport and Recreation and Lotterywest.

The Club is very proud to have had long term sponsorship relationships with FAD naming rights sponsors All Marine Services, Club Marine, Fremantle Sailing Club, Furuno and Hillary's Yacht Club with Hillarys Boat and Tackle.

More information on the FAD program can be found at [www.pgfc.com.au/fads/](http://www.pgfc.com.au/fads/).





# NEW MEMBER'S SUCCESS

## PHILIP CHALKO

We first met Philip Chalko and Matthew Schofield when they turned up unannounced at a FAD working bee held on 19th October 2015. Pleasantly surprised that morning that so many members had shown up and now two extras who said they had seen mention of the working bee on the PGFC website and decided to come along. It was terrific to meet them and by the end of the morning they were both members too. Coming along to the next social night they shared their plan to take off for Exmouth and get Matt his first billfish.

*Starting in the Exmouth Gulf with lures they soon learned that live bait was the go and that technique was critical. An inspiring story for other new members and a great example of tenacity for those keen to catch billfish. Philip's story:*

“ Philip and Matthew, both new members of PGFC, recently returned from an expedition to Exmouth where they competed for the first time in the EGFC Billfish Bonanza. The tool of choice was Philip's trusty 21ft Seaswirl Striper “All Banged Up”.

The forecast was looking pretty dubious with most days expected to reach 20+ knots. The day before the competition looked to be nice and still, so the boys headed out from Tantabiddi to try their luck raising a marlin. It didn't take more than half an hour after setting the spread to raise a solid black. It was the first billfish Matt had ever hooked but unfortunately, after a few good jumps and peeling a lot of line, the line went slack. There was nothing left but the leader, with hooks and lure gone. A quick

examination concluded gear failure, and it just happened to be the only rig that was “professionally made” where the crimp slipped the line.

As the weather was calm and it was the day before the comp, a quick deep drop seemed to be a good idea, with a mandatory floating bait to be set just in case. Soon after, the deep drop rig hit the 400m mark and it was connected to what seemed a promising fish. It turned out to be a large bronze whaler shark. With shark not being on the target list, it was quickly leadered and cut free. The plan was to go back to deep dropping when another four sharks were spotted circling the boat. With that, heading back to the ramp was the best option.



A tagged sail being swum before release





The original strategy for the competition was to target marlin, however, during the competition briefing the boys were convinced by other teams that the sailfish bite was on and that would be the way to go. Never having caught sailfish, they considered it worth a try. The first day of the comp started off well, with a solid 30+kg sailfish being caught on the troll by Philip while searching for the grounds. The fish was tagged and the mandatory pr-release photos were taken. Spirits were high as they were one of the first boats to call in a catch. Shortly afterwards, half a dozen boats were heading full speed towards "All Banged Up". They knew they were in the right area.

Within minutes of the other boats getting close, jumping fish suggested the other boats were hooked up. Moments later the radio lit up with multiple calls of tagged fish. This all happened so quickly that Matt and Phil realised they needed to change their tactics to compete. After closely watching the pro boats (the 2 main charter operators from Exmouth), they realised the best method was to pitch live baits. Frantically the search for Sabiki rigs was on. Shortly, the live bait tank was filled. The next few hours were frustrating; always seeing others catch fish around them and either chasing the pros or having the pros pass them on the way to a bait ball. PGFC member Luke Ryan's "Simrad" had a fantastic day with tagging eight sailfish.

Fired up for the second day with a full tank of fuel and a clear game plan, they

motored onto the fishing grounds just as the competition for the day started. With live bait sorted, the chase was on for sailfish. Today, they were not going to simply watch as others steamed past them. The water was rough and the ride bumpy but they were determined. After the first couple of hours of chasing bait balls, the boys were literally all banged up. Fortunately, the mid-afternoon glass off kicked in and made life a little more comfortable.

The competition was feverish, with most teams chasing sailfish. Philip spotted a few birds working an area some distance away from where all the other boat action was and stealthily motored towards it. From quite some distance, it was clear to see a few sailfish working the bait with their fins and bills breaking the glassy surface. By this stage, Matt has his casting technique perfected and landed the bait right on the head of one of them. The wait for the fish to take the bait was on, the line started peeling off in free spool. In the excitement of hooking the fish the bail arm was immediately closed. It all seemed like a good hook up and it didn't take long before the fish was within tagging distance. As the tag pole got close to the fish, it shook the hook loose and swam free. Lesson learnt - you need to free spool longer to make sure the circle hook can do its job.

On the third and final day, redemption was planned. The wind was up from early on and as they reached the fishing grounds, they realised it was only them and the two charter boats. The bait

wasn't easy to find and the going was really tough. "Simrad" called in a marlin tag from out west, so the boys decided to cut their losses and try find better conditions chasing marlin. With a solid 15-20kts blowing, the run out to the shelf wasn't fun. On reaching 150m of water, the spread was set. No birds, no bait, it was really quiet apart from the howling wind. It seemed as if the radio wasn't working either as there were no calls in for tags. After a few long hours, the pin was pulled and they motored home with stats of 3-3-1 on sailfish and zeros for marlin for the entire competition.

The wind kept getting stronger after the competition, with Philip even getting a windsurfing session in a solid 25kts. The goal to each tag a billfish had not been achieved, so another unpleasant boating session in paradise was embarked upon. This time it was outside of competition and the pro boats were nowhere to be seen. It took only an hour after getting to the grounds to catch, tag and release Matt's first sailfish.

***Mission successfully completed. ”***



A healthy sailfish about to be released

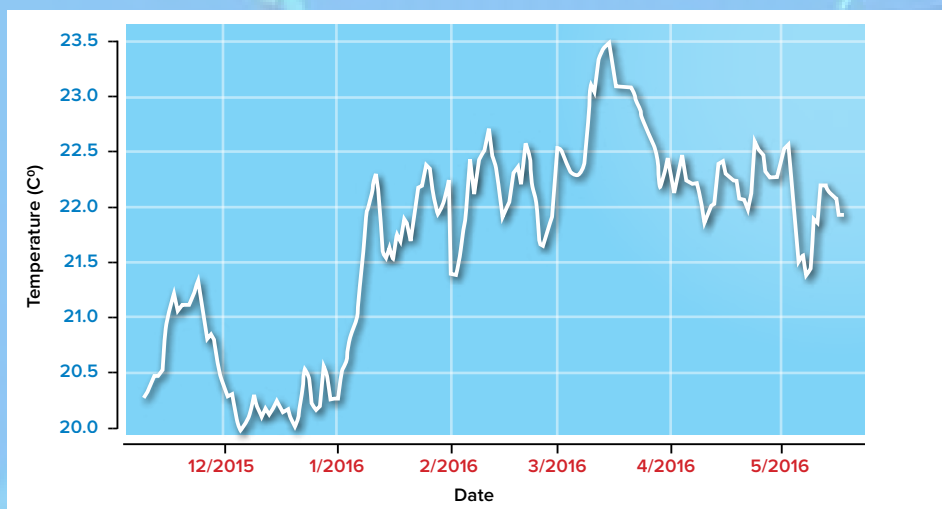




# ROTTNEST TRENCH TEMPERATURE STUDIES

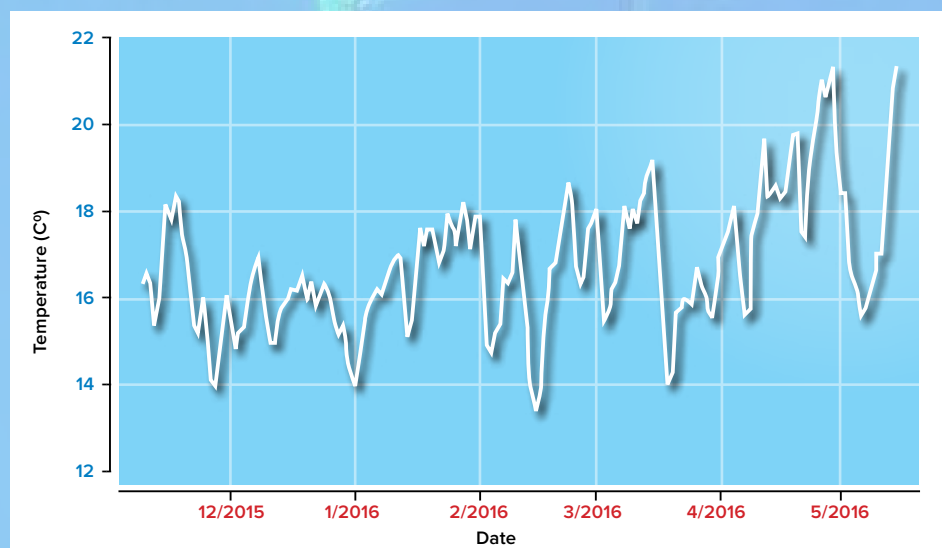
*PGFC has been collaborating with WA Fisheries to monitor sea surface and seabed temperatures for many years. The information below was provided by Mark Rossbach, a scientist with W.A Fisheries and Marine Research Laboratories.*

Near-surface water temperatures at the Rottnest FAD at the end of 2014 were 20-21°C but then climbed in a series of short-term oscillations to reach a peak of 24°C on 20th March before dropping away again into autumn. The bottom logger was unfortunately lost. Following the 2015-16 deployment both top and bottom loggers were retrieved. [See graphs below.](#)



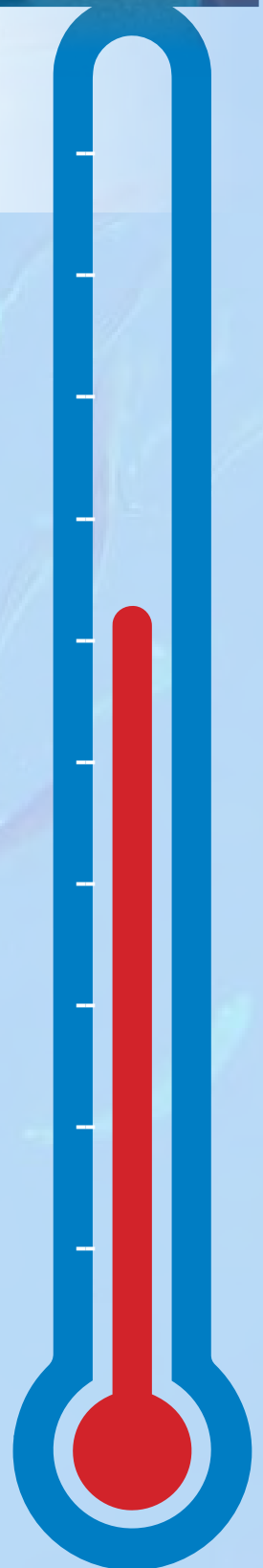
**Figure 1: Rottnest FAD top logger**

Near-surface water temperatures at the Rottnest FAD at the end of 2015 were 20-20.5°C but then climbed in a series of short-term oscillations to reach a peak of nearly 24°C on 13th March before dropping away again into autumn.



**Figure 2 Rottnest FAD bottom logger**

Near-bottom water temperatures at the Rottnest FAD at the end of 2015 were 13-14°C but then climbed in a series of short-term oscillations to reach a peak of nearly 21.8°C on 29th March before dropping away again into autumn.





Trusted to protect  
your boating  
lifestyle

Alistair McClashan

Australia's No. 1 provider of boat insurance  
for more than 40 years

1300 00 CLUB (2582)

[clubmarine.com.au](http://clubmarine.com.au)



CLUB  
MARINE  
INSURANCE

Insurance is issued by Club Marine Limited (Club Marine) ABN 12 007 588 347 AFSL No. 236916 as agent of the insurer Allianz Australia Insurance Limited (Allianz) ABN 115 000 122 850 AFSL No. 234708. Club Marine is a related body corporate of Allianz. Before making a decision, please consider the Product Disclosure Statement (PDS) available by phoning 1300 00 2582.





# AITUTAKI COOK ISLANDS

Club member Tom Doyle had the good fortune earlier this year to visit one of the most beautiful islands in the world. Situated just 140 Nm north of the capital Rarotonga in the Cook Islands and reached via Auckland, Aitutaki is a mecca for bone fish, GTs, billfish, scuba diving, snorkelling and windsurfing. Just 19° south of the equator and surrounded by warm, deep and clear water it is an ideal tourist destination being well serviced, but not over developed. Only covering 18 sq km, it is home to just 2000 friendly residents living a semi-subsistence lifestyle and with a delightfully laid back approach to life.

Tom's objectives when visiting the island on his brief sojourn was to squeeze in as much fishing as possible, targeting bonefish on the flats and GTs around the bombies and drop-offs – all on fly. The waters of the atoll are renowned for bone fish, a species that is now recovering from over exploitation by commercial net fishers. The value of the species as a tourist drawcard far exceeds their value as food, especially since there are good stocks of yellowfin tuna and mahi mahi accessible not far outside the lagoon. Since being taught how to line fish, guiding has created employment for many of the newly skilled locals.

World wide, bonefish average 6-8lb. The Aitutaki bones often weigh in at up to 18lbs. With the emerging interest, it is near certain that a world record fish will be caught in Aitutaki in the not too distant future.

On the one day when weather permitted, Tom hired a local guide and boat, starting the day looking for patrolling GTs on the sandbar dropoffs and bombies. The GTs, mostly running in pairs, were very skittish and were shy of poppers and lures. With plenty of water to fish it was simply a matter of running across the lagoon to try other locations before being rewarded.

Much of the fishing was wading the flats in water not much more than knee deep sight fishing, helped along by the experienced guide. Schools of up to 10 bonefish were attracted by crab pattern lures and despite being easily spooked Tom managed to catch and release many fish up to the 6-8lb mark. regretablely a number of fish of 10-12lb, while clearly visible, were reluctant to play.

Summing up the experience, Tom said that he developed his skills and techniques in a ideal environment and like quite a few other members who have visited this paradise, he'll be back.







# MAINTAIN YOUR BOAT

For the best day on the water  
complete the **BEST** check...

**Boat, Equipment, Safety equipment and Trailer.**

Visit [www.transport.wa.gov.au/imagine](http://www.transport.wa.gov.au/imagine)  
or call 1300 863 308



Department of  
Transport





# SOUTHERN BLUEFIN TUNA

## Code of Practice - Recreational Fishery

Information for responsible  
catching, handling, releasing and  
tagging of **Southern Bluefin Tuna**.



Photo: Al McGlashan

Research by:



Funded by:





Recreational fishers can each play a part in improving the Southern Bluefin Tuna fishery by applying best practices for responsible fishing. Applying best practice considers the welfare of individual fish and minimises impacts on fish stocks. This Code of Practice has been developed based on scientific research specific to the recreational Southern Bluefin Tuna fishery, existing science based literature on the impacts of recreational fishing and consultation with peak recreational fishing groups.

There is no legislative requirement to follow codes of practice; rather they are designed to provide fishers with fact-based information required to fish in a responsible way. Taking the time to read, learn and apply the information in this document will improve the recreational fishing experience for everyone.

## Catching Southern Bluefin Tuna

Southern Bluefin Tuna (SBT) are a large fish with those caught by recreational fishers typically weighing 10 – 50 kg, although it is not uncommon to catch fish in excess of 100 kg. Is your fishing gear up to the job? Are you using gear that will minimise impacts to the fish? Are there things you can do to avoid degrading the quality of the flesh if you plan to keep it for eating, or improve the fish's chance of survival if you plan to release it?

**Minimising the time it takes to retrieve a fish to the boat will reduce the stress it experiences.**

Just like when a human exercises, lactic acid and stress hormones accumulate in the blood and muscle tissue. Not only does this lessen the quality of the flesh if you are planning to keep the fish to eat, but fish that are released after long fight times may take longer to recover.

**Fight time can be reduced by using a heavier line class, buying a good quality rod and reel that is up to the job and educating yourself on good fishing techniques.**

Using heavier line is the best way to reduce fight times for smaller SBT. For larger fish a combination of heavier line and angling-boat driving experience is required. There are many experienced game fishers who can give tips on improving fishing techniques as well as instructional videos online. For any large fish a gimbal and harness is essential to help you control the rod and reel. Joining a fishing club that is associated with the Game Fishing Association of Australia is a great way to meet experienced anglers and receive information on responsible fishing practices.

**Consideration of the type of hook you use can minimise damage to the fish. J hooks on trolled lures cause far less damage than treble hooks. Circle hooks should be used when bait fishing for SBT.**

It is a simple process to replace treble hooks on hard body lures with single hooks. This will substantially reduce the damage to the fish, improve its welfare and increase its chance of surviving if it is released.

Research has shown that a majority of fish caught when trolling lures are hooked in the mouth. So for trolling, J hooks are fine. When bait fishing however, the fish has more time to swallow a floating bait resulting in potential for deep hooking. Circle hooks have been demonstrated to reduce the incidence of deep hooking.



## Minimising predation of hooked fish

Hooked fish have a reduced ability to avoid predation. Interactions between hooked SBT and seals are relatively common in Tasmania, and anecdotally, interactions have occurred in SA and Victoria. Whether you plan to keep or release the fish minimising predation interactions is a good idea. Seals learn quickly and rewarded behaviour will increase interactions.

**Avoid fishing in areas where predators are in high abundance. Never feed a predator, including fish carcasses after filleting. Minimise fight time to reduce the possibility of a predation.**

Seals will learn to associate boats with a feed. If a predation occurs move away from the area before you resume fishing. Avoid releasing fish in areas where predators are present, particularly if the fish was chased during retrieval to the boat.



Photo: Al McGlashan



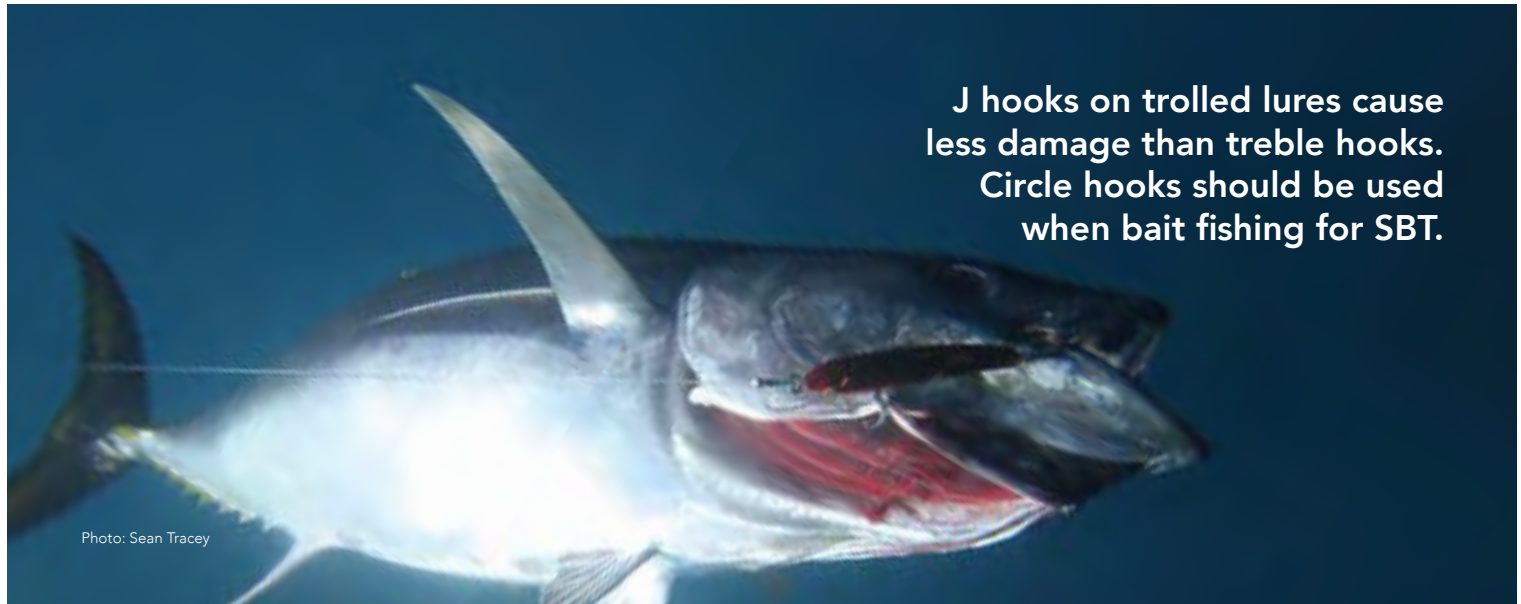


Photo: Sean Tracey

**J hooks on trolled lures cause less damage than treble hooks. Circle hooks should be used when bait fishing for SBT.**

## Handling Southern Bluefin Tuna

Whether you plan to retain or release a fish, it is important to consider how you handle it. Poor handling can affect the welfare of the animal, reduce its chance of survival if released and affect flesh quality if you plan to keep it to eat.

### Retaining fish

Bluefin Tuna are an iconic species regarded around the world for their high quality flesh, particularly for the raw fish (sashimi) market. This high demand has led to commercial overfishing, but stocks are currently rebuilding under strict international fishing management arrangements. Recreational fishers in Australia have the opportunity to enjoy this highly prized species whether it is to catch and release or serve up quality seafood. Recreational fishing effort has been increasing as the stocks rebuild. With this in mind SBT should be treated with respect and regulations adhered to.

**Know the regulations before you head out fishing, they may be different in each state. Think about the quantity of fish you need to keep, and note that highgrading is illegal. Catch regulations are a limit not a challenge!**

Bag and possession limits used to manage recreational fisheries are designed to control catch by stopping individuals taking excessive numbers of fish. Ideally this allows more fishers access to the fish, sharing the resource. Catch limits alone however, do not 'cap' recreational harvest since there is no limit on how many people can join the fishery. For SBT, a high profile species recovering from overfishing it is important that authorities are aware of how much is being caught. This information can then be used by fisheries scientists to ensure that management is effective and stocks continue to rebuild.

The size of the SBT you catch can vary greatly and this will have a big impact on the amount of fish you could end up taking home. Before you set out fishing, consider how much flesh you and the others on the boat really need, rather than how many fish you are

going to keep and ensure that you have everything you need to process and store the fish appropriately, including space in the fridge or freezer at home. Only take enough fish to accommodate what you need. Avoiding fish wastage is a crucial part of being a responsible fisher.

### *Recreational fishing surveys*

Recreational catch is determined by specially designed surveys. These surveys are used regularly across many recreational fisheries to provide data for sustainable management. A survey method to assess the recreational catch of Southern Bluefin Tuna is currently being designed. So if you are invited to join a survey your participation will help to ensure that fish stocks are being managed effectively.

**Bring the fish aboard carefully, trying to avoid damaging the fish as bruising will affect the quality of the flesh.**

Landing the fish onto a padded mat or soft surface will minimise bruising the flesh. A dark, wet cloth over the eyes can assist in keeping the fish calm.

**Immediately dispatch the fish by administering a spike to the brain then bleed the fish by making a cut behind the pectoral fins on both sides.**

It is important to dispatch the fish quickly. The most effective and humane way to do this is by spiking the brain, a process known as iki jime (see website links). Not only is this good practice in regard to the welfare of the animal, it also stops the fish moving which can cause the flesh to heat up and reduce its quality. The fish are bled to reduce the amount of blood that is retained in the flesh. The more blood that is released the milder the flavour. Poorly bled Bluefin Tuna are often too rich in taste for most people and can lead to wastage if the flesh is then discarded.



**Remove the gills and organs straight after brain spiking and bleeding. Then put the fish trunk into a fish bag, ice chest or esky with ice to cool the body temperature.**

Southern Bluefin Tuna are endothermic, which means they can heat their body, maintaining an internal temperature above that of the water. Once the fish has been processed it is important to reduce the temperature of the flesh as quickly as possible to avoid it degrading. An ice slurry is particularly effective as there is greater surface area contact than with just ice.

**Reduce wastage by learning how to fillet Southern Bluefin Tuna effectively. There are some good instructional videos on YouTube.**

Filleting a large fish requires a bit more work and different techniques to smaller fish. There are several good videos on YouTube illustrating how to effectively fillet tuna to minimise wastage and ensure you have the best quality flesh. Investing in a good quality, large filleting knife that is kept sharp will also make the job easier.

## Releasing fish

Releasing fish is beneficial in reducing the impact of fishing on populations. A fundamental assumption of catch and release is that the released fish not only survive after release but also that they are not damaged in a way that affects their ability to function normally, including spawning.

The survival rate of SBT released using typical recreational fishing methods is greater than 80%. Little, however, is known about the longer-term effects of catch and release fishing on tuna. Therefore reducing stress on the fish is important not only to increase their chance of post-release survival but also to minimise the risk of sub-lethal effects. There are several practices outlined earlier that you can do to minimise stress and damage, and if you are planning on releasing fish you should consider these carefully. Commonsense also plays an important role, if you have done everything right and the fish is not recovering after an extended period of time when being resuscitated boatside consider keeping that fish as part of your catch limit and let the healthy ones go. Do not gaff the fish if you intend to release it.



*Researchers investigating post-release survival of SBT using state of the art satellite tags.*

**When releasing a fish hold it alongside the boat while moving ahead slowly so that water is passed over the gills until it actively swims away. Be aware of avoiding predation by sharks or marine mammals.**

Tuna are ram ventilated. This means that they need water flowing over their gills to breathe. Holding them in the water with the boat stationary is far less effective at assisting this process.

Fish may swim away immediately or take up to several minutes to recover. Research on recreationally caught large Atlantic Bluefin Tuna has shown that it may take 15 minutes or more for these big fish to recover.

**If the hook can be seen, and is not in a position where removal will cause major damage, remove it with pliers or a de-hooker while the fish is still in the water.**

Bleeding can look a lot worse in the water as the blood is diffused. Minor bleeding from hook damage in the jaw has been shown to have little impact on survival post-release.

**The best way to reduce stress on a fish is to shorten fight time, minimise damage by considering hook choice and using good fishing and handling techniques.**

Photo: Klaas Hartmann





**If the fish is deep hooked consider keeping it as part of your bag limit as the potential damage may affect survival after release, but if you choose to release it leave the hook in the fish and cut the line as close as possible to the hook, making sure the fish is resuscitated prior to release.**

Research on other fish species has shown that when a fish is deep hooked leaving the hook in causes less damage than trying to remove it and that the likelihood of survival is higher.

**If the hook has caused damage to the gills the fish has a far lower chance of survival, consider keeping fish with gill damage as part of your bag limit.**

Research has shown that damage to the gills of SBT affects their chance of survival. If there is obvious damage to the gills it is best to keep the fish as part of your catch limit.

**Make sure anything that comes into contact with the fish is wet.**

Fish have a layer of mucus covering their bodies which acts as a protective barrier. Making sure things that come into contact with the fish, including your hands, are wet will reduce the amount of mucus that is removed.

**If removing a fish from the water for a photo prior to release, consider using a landing net, avoid lifting it by the gill plate or tail, try and support the whole body, and minimise time out of water.**

Taking a photo of a good catch is commonplace and if done carefully will not dramatically affect the chance of survival once released. When removing the fish from the water be careful not to lift it by the tail unless the weight of the body is being supported. Also take care not to slip your hand in under the gill plate, which could result in damaging the gills.

When the fish is onboard the same principles apply. Handle the fish carefully, avoid dropping the fish, putting your hand in under the gill plate, or suspending the fish by the tail. Fish that are too large to retrieve onto the boat without damaging it should be left in the water. A photo of the fish can be taken boatside.

Minimising the time the fish is out of the water is important, have the camera ready and clear the deck of the boat before it is removed from the water. Again make sure the fish is resuscitated once back in the water before releasing it.



## Tagging fish

Tagging fish provides data for research. If the fish is recaptured it can provide information on movement and growth, and in some cases natural mortality rates across the population. For the tagging data to be useful the tagging needs to be done properly and the tagging event recorded accurately. If done incorrectly the data is less useful and may adversely affect the fate of the fish after release. The NSW-DPI game fish tagging program is currently the best source and repository of recreational game fishing tags and data.

**It is best to tag the fish while it is still in the water, particularly for larger fish.**

As previously explained the fish should be left in the water whenever possible. If you do remove the fish for tagging or a photo follow the protocols in the previous section.

**If applying the tag while the fish is out of the water ensure that it is carefully placed on a wet, padded surface.**

To minimise damage to the fish lay it on a padded surface that has been wetted with saltwater. A wet towel laid over the eye will often help to calm the fish making the tagging process easier and faster. It is also far easier if two people are involved in the process.

**Administer the tag using an appropriate tagging tool, place the tag directly under the second dorsal fin, and insert the tag at an angle leaning back towards the tail. Ensure the tag anchor passes through the muscle and bones under the fin.**

Poor placement of the tag can have several negative effects. Primarily, if the tag is placed too low, towards the lateral line of the fish, it can cause significant damage to the fish. Secondly, poor tag placement may lead to the tag falling out after release. Tag loss can affect the interpretation of the tagging data, particularly if the data are used to assess natural mortality.



The tags are designed so that the anchor is locked in between the bones that connect to the fin rays. Applying the tag just under the fin and on an angle laying the tag back towards the tail is the best way to ensure this occurs. A small twist of the applicator can assist in making sure the anchor head is locked in.

### Record the length of the fish as accurately as possible.

The easiest way to record the length of the fish is to use a sewing measuring tape. Run the tape from the tip of the lower jaw, along the body in a straight line to the shortest point at the fork in the tail. This can be done either in water or on the deck. This process may be easiest using two people depending on the size of the fish.

### Record all the capture details accurately on the tagging card.

The different aspects of the capture that are listed on the card are important and included for a reason. Interpreting the data relies on the completeness and accuracy of the data recorded.

### Return the tagging card to the administering group as soon as possible.

The tag recapture rate of Southern Bluefin Tuna is quite low so the data from each recaptured fish is valuable. If the tagging card is lost or forgotten about after tagging and the fish is recaptured the rare opportunity to learn more about Southern Bluefin Tuna from the individual fish is lost.

Return the tag card using the return address or return unused tags/cards to your club tagging officer

## The NSW DPI Game Fish Tagging Program



Is the largest game fish tagging program of its kind in the world and has been in operation since 1973. It is used to obtain information on the biology (distribution, movement, growth, exploitation) of billfish, tunas, sharks and sport fish and encourages game fishers to participate in the management of the fishery.

SBT are a key species supported by the Program, with over 20,000 fish recorded as tagged and released and 130 recaptures. To date, the furthest traveled was a fish tagged in the Neptune Islands (South Australia) and recaptured in the South Atlantic Ocean, just past South Africa, clocking up a straight line distance of 5221 nautical miles.

The NSW DPI Game Fish Tagging Program issues tags free of charge and works in close association with the NSW Game Fishing Association and the Game Fishing Association of Australia. The program is run using funds from the NSW Recreational Fishing Trust. Over 425,000 fish have been tagged under the program so far. If you would like to get involved in the program please contact your club, or phone or email the Game Fish Tagging Program on **(02) 4424 7423** or **gamefish.tagging@dpi.nsw.gov.au**.

A correctly completed tag card ready for return.

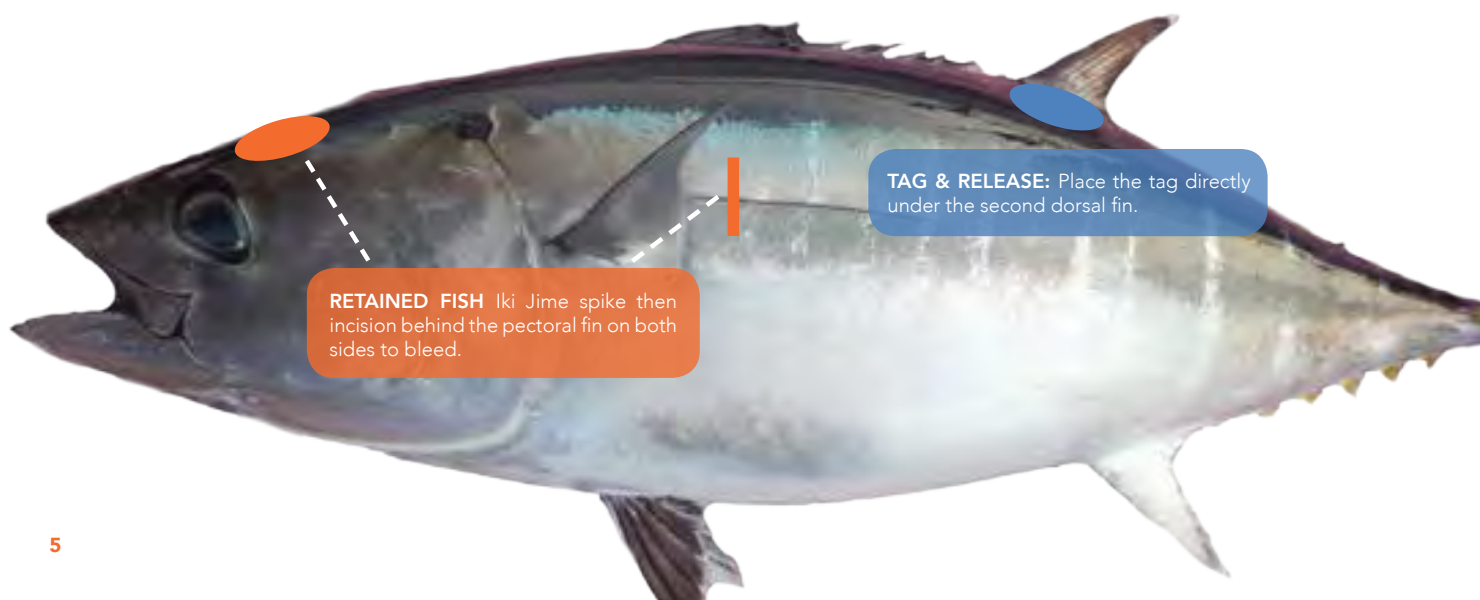






Photo: Al McGlashan

## Other sources of information on best practices for recreational fishing

This code of practice relates specifically to recreational fishing for Southern Bluefin Tuna, but a lot of the practices described are just as relevant for other game fish species. For more information on best practices when recreational fishing for large pelagics and recreational fishing in general, the following links are useful:

Recfish Australia National Code of Practice:

[www.recfishingresearch.org/national-code-of-practice/](http://www.recfishingresearch.org/national-code-of-practice/)

Gamefishing Association of Australia Code of Practice for a Responsible Gamefish Fishery

[www.gfaa.asn.au/new/index.php/gfaa-information/gfaa-principles-code-of-practice](http://www.gfaa.asn.au/new/index.php/gfaa-information/gfaa-principles-code-of-practice)

Neatfish: A standard for the National Environmental Assessment of Tournament Fishing

[www.neatfish.com](http://www.neatfish.com)

Ike jime (also available as a mobile device applicaiton)

[www.ikijime.com/fish/tuna-southern-bluefin/](http://www.ikijime.com/fish/tuna-southern-bluefin/)

New South Wales Department of Primary Industries Game Fish Tagging Program

[www.dpi.nsw.gov.au/fisheries/recreational/saltwater/gamefish-tagging](http://www.dpi.nsw.gov.au/fisheries/recreational/saltwater/gamefish-tagging)

Department of Primary Industries, Parks, Water and the Environment Tasmania

[www.dpipwe.tas.gov.au/sea-fishing-aquaculture/recreational-fishing/scalefish/tuna-fishing/catching-handling-and-releasing-your-tuna](http://www.dpipwe.tas.gov.au/sea-fishing-aquaculture/recreational-fishing/scalefish/tuna-fishing/catching-handling-and-releasing-your-tuna)

[www.dpipwe.tas.gov.au/sea-fishing-aquaculture/recreational-fishing/scalefish/responsible-fishing](http://www.dpipwe.tas.gov.au/sea-fishing-aquaculture/recreational-fishing/scalefish/responsible-fishing)

Primary Industries and Regions South Australia

[www.pir.sa.gov.au/fishing/recreational\\_fishing/handling\\_your\\_catch](http://www.pir.sa.gov.au/fishing/recreational_fishing/handling_your_catch)

BlueWater Boats & Sportsfishing magazine

Booth, G. (2010). Tagging - for results, making it easier for you and better for science. *BlueWater Boats & Sportsfishing magazine*. 82: 82-88.





## Contact

Media office  
20 Castray Esplanade, Battery Point TAS 7004  
+61 3 6226 6379  
[imas.hobart.reception@utas.edu.au](mailto:imas.hobart.reception@utas.edu.au)

Developed by IMAS as a component of FRDC project 2013-025:  
*Assessing post-release survival of Southern Bluefin Tuna from recreational fishing.*

This code of practice has been endorsed by:





# CLUB RULES AND TROPHY LIST

All fishing will be conducted in accordance with the GFAA Angling Rules and Equipment Regulations

## Extract from the current PGFC Constitution

### 1 Weight Recording

- The Weigh-master shall weigh and check, according to all requirements of the official Club Capture Certificate, Measure and Release Cards and Tag Cards, all fish submitted by a member. He or she shall then, if satisfied sign the Capture Certificate or Card.
- In the event of the Weigh-master being unable to attend, a Committee member shall act in his or her stead.
- In the event of the Weigh-master or a Committee member being unable to attend, consideration will be given to a capture weighed by an Ordinary Member.

### 2 Capture Certificates, Tag Cards and Measure and Release Cards

The Committee shall have printed and made available to members at reasonable cost, Capture books containing Capture Certificates; Measure and Release Cards and Tag Cards.

### 3 Trophies and Awards

All trophies for competition shall be fished in Western Australian waters. Local Waters are defined as those within 75 Nm of Fremantle.

In club competitions held from a base remote from Fremantle, for the purpose of the competition Local Waters are defined as those within 50 Nm of the nominated remote base.

### 4 Scoring Formulae For Club Trophies

- These rules apply to annual trophies and are independent of tournament and competition rules and trophies.
- All captures must comply with GFAA rules.
- All captures must be entered on an original numbered PGFC Capture Certificate, Measure and Release Card or Tag Card and after complying with Item 1(a) above, submitted to the Weigh-master within twenty-one days of capture or before the

30th September, whichever is earlier.

- The line class, Competitor ID and Boat ID shall also be recorded on the card. All cards must be fully completed to be eligible for inclusion in scores.
- Only Club members' points will contribute to boat points.
- Captures in tournaments where anglers or boats represent other clubs in competition against PGFC will not be recognized.
- Any fish weighed must be in edible condition at the weigh station to be awarded points
- All captures must comply with all State and Commonwealth laws.

### 5 Formulae For Scoring Captures

*Eligible Species (See GFAA eligible species table)*

$$\frac{\text{Fish weight} \times 100}{\text{Line class}} = \text{Points Scored}$$

*Note: All fish must be equal to or greater than the line class being used.*

*Sharks must be equal to or greater than twice the line class being used.*

#### Billfish

$$\frac{\text{Fish weight} \times 150}{\text{Line class}} = \text{Points Scored}$$

#### Tags

Species other than billfish and sharks, tagged, must be in excess of 60cm fork length (yellowtail kingfish 70cm), and will be given allocated weights according to measured length with weights calculated from the club's current Measure and Release tables.

#### TAG CARDS

Tag cards are an important part of the club's record keeping, not only for scoring but also for historical record keeping (the club has around 50 years of records). The data is compiled for scientific use by NSW Recreational Fishing records along with that collected Australia wide.

One of PGFC's tournament rules is that a tag card or capture form which is incomplete or inaccurate disqualifies a catch. This also applies to Club Championship points. The most common errors are failing to include line class, angler's ID or boat ID.

At right is an example card which has been correctly completed.

www.dpi.nsw.gov.au

NO A 542571

DATE: 01/01/2011

TIME: 9:30 AM

LOCALITY: ROTTMER TRENCH

LINE: 32000

LONG: 1151350

SPECIES: MAHI MAHI

FIGHT TIME: HOURS: 0 MINUTES: 10

LENGTH (cm): 50

TL: ☒ PL: ☒ MEASURE: ☒

EST WEIGHT (kg): 4

METHOD: DEAD BAIT: ☒ LURE: ☒ LINE CLASS: 2

CIRCLE HOOK: YES ☐ NO ☒ NON OFF-SET: YES ☐ NO ☒

HOOK LOCATION: THROAT: ☒ SIDE: ☐ BLEEDING FROM GILLS: YES ☐ NO ☒

FISH CONDITION: EXCELLENT ☒ MARGINAL: ☐

ANGLERS NAME: JOE SMITH ID 904

PHONE: 91234354

ADDRESS: 14 NORTH ST FREMANTLE

POC: 6004

CLUB: PGFC

BOAT NAME: XRAY 12 SD

SKIPPER: P. Jones

REMARKS:

PLEASE COMPLETE & MAIL TODAY OTHERWISE TAGGING IS OF NO VALUE.





**Tagged billfish and sharks are allocated the following points:**

Marlin Black	33000
Marlin Blue	33000
Marlin Striped	16500
Other Billfish	16500
Shark (Minimum length 1.5 m)	5000

Allocated Weight  
Line class = Points Scored

*All other species must be either measured and released or weighed*

### **Sharks (All)**

All eligible sharks tagged must equal or exceed twice the line class used in the capture. Whaler sharks, which include tiger sharks must have a maximum 70cm inter-dorsal length.

### **Schooling Fish**

With the exception of billfish, only five of each species will be accepted tagged or weighed per boat per day. All fish count towards Champion Angler and Champion Boat.

### **Club Competition Days**

Club competition days will have angler points allocated towards club championship scores for all fish. All fully completed Tag Cards, Measure and Release Cards and Capture Forms must be returned to the weigh station on the day of capture.

## **6 Trophy List**

### **President's Trophy**

Boat with highest points scored in local waters

### **Club Trophy For Runner Up Boat**

Boat with second highest points scored in local waters

### **Eddy Moss Trophy**

Male angler gaining highest points in local waters

### **Club Trophy**

Male angler with second highest point score in local waters

### **Kay Webber Trophy**

Female angler gaining highest points in local waters

### **Secretary's Trophy**

Female angler with second highest point score in local waters

### **Junior Trophy**

Junior angler (under 16 years) scoring the highest point score in local waters

### **Small Fry Trophy**

Small Fry angler (under 11 years) scoring the highest points in local waters

### **Tom Bell & Associates Trophy**

Highest points scoring fish weighed - local waters

### **Club Trophy**

Highest points scoring fish tagged - local waters

### **Pannawonica Trophy**

Boat with highest aggregate points score for billfish in local waters

### **Roland Smith Trophy**

Largest game fish weighed in local waters excluding billfish & sharks

### **Patron's Trophy**

Most species tagged and released in local waters

### **Basil Downs Trophy**

Angler with highest aggregate points score tag & release marlin in local waters

### **Most Meritorious Capture Outside Local Waters**

Highest point scoring fish outside local waters

### **Ivan Quartermaine Trophy**

Angler with highest number of fish tagged and released in WA waters

### **Maher Family Trophy**

Highest point scoring mackerel weighed in WA waters

### **Michael Officer Trophy**

Team trophy for the first marlin tagged and released on a Club registered boat by a Club member in local waters

### **Marlin Cup**

Billfish event only run over two days. Trophy goes to boat with highest points.

### **Neil Patrick Trophy**

Angler tagging & releasing the most marlin exceeding line class worldwide excluding local waters.

### **Ian McCarthy Trophy**

Angler with the first broadbill tagged and released or weighed to go line class in WA waters.

### **Line Classes Local Waters**

Heaviest fish weighed in each line class in local waters

### **Line Classes Outside Local Waters**

Heaviest fish weighed in each line class outside local waters

### **Club Person Of The Year**

Non-committee member recognised for outstanding contribution to the Club during the course of the year.

## **Notes**

- In the case of a tied score, the trophy or prize will be awarded on a count back. The first capture certificate or tag card to be received by the weigh-master, resulting in the highest point score (or number of fish tagged), will be deemed the winner.
- Fish caught in WAGFA ratified competitions other than PGFC events, and other than those disqualified in clause 2(f), will be eligible for club points provided they are submitted on PGFC capture forms. If tagged, an image or copy of the tag details with tag number, angler name, fish type and line class used must be sent to PGFC Weigh-master within 21 days of date of capture, or by 30th September whichever is earlier.
- Club Person of the Year is selected by the President and may be awarded to any ordinary member except a committee member. The recipient may be given the award in more than one (including successive) year.
- In respect to annual awards, the decision of the Committee is final, and no correspondence shall be entered into.
- After a fish is awarded a trophy, it is then not eligible for another trophy unless there is no other eligible fish in the category.

CHECK [WWW.PGFC.COM.AU](http://WWW.PGFC.COM.AU) FOR ANY CHANGES TO RULES AND TROPHY LISTS





# MEASURE & RELEASE TABLES 2017

NSW DPI Fisheries and Aquaculture Department administers the national tagging scheme as adopted by GFAA. In June 2014 it ceased processing of tag records for fish which measured less than 60cm (70cm yellowtail kingfish). This change in policy affects our club as many fish captured off Perth are small tuna, salmon and tailor. Adding to this are WA Fisheries imposed bag limits which reduce the ability to bring all

but a small number of fish in to be weighed. The club's aim is to discourage weighing of fish just for points. Another spinoff from this initiative is a more equitable scoring system for light tackle fishing.

Perth Game Fishing Club has taken the initiative in how to recognise scoring of small fish in the future with the introduction of a Measure and Release program.

Cm	Amberjack	Australian Salmon	Mahi Mahi	Samsonfish	Snapper	Tuna (SBT, YFT, Big Eye)	Skipjack (Striped) Tuna	Wahoo	Yellowtail Kingfish	Spanish Mackerel	Shark Mackerel
	Kg	Kg	Kg	Kg	Kg	Kg	Kg	Kg	Kg	Kg	Kg
35					0.92						
36					0.99	0.97	0.87				
37					1.07	1.05	0.95				
38					1.15	1.13	1.04				
39	0.93	0.91			1.24	1.23	1.13		0.91		
40	1.00	0.98		0.88	1.33	1.33	1.23		0.97		
41	1.07	1.05		0.94	1.43	1.43	1.34		1.03		
42	1.14	1.12		1.02	1.53	1.54	1.45		1.11		
43	1.22	1.20		1.09	1.63	1.66	1.57		1.19		
44	1.30	1.28		1.17	1.74	1.77	1.69		1.27		
45	1.38	1.36	0.90	1.25	1.85	1.90	1.82		1.34		
46	1.47	1.45	0.96	1.33	1.97	2.03	1.95		1.43		
47	1.56	1.54	1.02	1.42	2.09	2.17	2.10		1.52		
48	1.65	1.63	1.08	1.52	2.22	2.31	2.25		1.61		0.94
49	1.75	1.73	1.14	1.61	2.35	2.47	2.41		1.70		1.00
50	1.85	1.83	1.21	1.71	2.48	2.62	2.57		1.79		1.06
51	1.96	1.93	1.28	1.82	2.63	2.78	2.75		1.90	0.86	1.22
52	2.07	2.04	1.35	1.93	2.77	2.96	2.93		2.00	1.03	1.27
53	2.18	2.15	1.42	2.04	2.92	3.13	3.12		2.10	1.20	1.40
54	2.29	2.27	1.50	2.16	3.08	3.31	3.33		2.22	1.03	1.49
55	2.41	2.39	1.58	2.28	3.24	3.51	3.53		2.34	1.10	1.56
56	2.54	2.51	1.66	2.41	3.41	3.69	3.76		2.46	1.17	1.67
57	2.66	2.64	1.74	2.54	3.58	3.87	4.00	0.90	2.58	1.23	1.75
58	2.79	2.77	1.83	2.67	3.76	4.12	4.19	0.95	2.71	1.31	1.89
59	2.93	2.91	1.92	2.81	3.94	4.36	4.44	1.01	2.84	1.39	2.01
60	3.07	3.05	2.01	2.96	4.13	4.56	4.69	1.07	2.98	1.46	2.16
61	3.21	3.19	2.10	3.11	4.33	4.80	4.95	1.12	3.12	1.54	2.29
62	3.36	3.34	2.20	3.27	4.53	5.03	5.22	1.19	3.26	1.62	2.41
63	3.51	3.49	2.30	3.43	4.74	5.29	5.51	1.25	3.41	1.71	2.55
64	3.67	3.65	2.40	3.59	4.95	5.56	5.80	1.32	3.56	1.80	2.68
65	3.81	3.81	2.51	3.76	5.17	5.82	6.10	1.38	3.71	1.89	2.83
66	4.00	4.00	2.62	3.94	5.40	6.10	6.42	1.46	3.87	2.00	2.98
67	4.17	4.15	2.73	4.12	5.63	6.39	6.74	1.53	4.04	2.09	3.14
68	4.34	4.33	2.85	4.31	5.86	6.68	7.08	1.61	4.21	2.18	3.31
69	4.52	4.51	2.96	4.50	6.11	6.98	7.43	1.68	4.38	2.30	3.44
70	4.71	4.69	3.08	4.70	6.36	7.31	7.79	1.77	4.56	2.41	3.60
71	4.89	4.88	3.21	4.90	6.62	7.62	8.16	1.85	4.74	2.52	3.77
72	5.09	5.08	3.34	5.11	6.88	7.95	8.55	1.94	4.92	2.64	3.97
73	5.29	5.28	3.47	5.33	7.15	8.30	8.94	2.03	5.12	2.76	4.17
74	5.49	5.48	3.60	5.55	7.43	8.64	9.35	2.12	5.31	2.88	4.37
75	5.70	5.69	3.74	5.78	7.71	9.00	9.78	2.21	5.51	3.01	4.57
76	5.91	5.91	3.88	6.01	8.00	9.39	10.21	2.31	5.73	3.14	4.77
77	6.13	6.13	4.02	6.25	8.30	9.76	10.66	2.41	5.94	3.28	4.97
78	6.35	6.35	4.17	6.50	8.60	10.15	11.12	2.52	6.14	3.42	5.17
79	6.58	6.58	4.32	6.75	8.91	10.56	11.60	2.62	6.37	3.56	5.37
80	6.81	6.82	4.47	7.01	9.23	10.96	12.09	2.73	6.60	3.71	5.60
81	7.05	7.06	4.63	7.28	9.56	11.38	12.60	2.85	6.82	3.86	5.81
82	7.30	7.31	4.79	7.55	9.89	11.82	13.11	2.96	7.06	4.02	6.05
83	7.55	7.56	4.95	7.83	10.23	12.27	13.65	3.08	7.29	4.18	6.31
84	7.80	7.82	5.12	8.12	10.58	12.71	14.20	3.21	7.54	4.35	6.53
85	8.06	8.08	5.29	8.41	10.94	13.19	14.76	3.33	7.79	4.52	6.80





# MEASURE AND RELEASE TABLES 2017

(CONTINUED)

	Amberjack	Australian Salmon	Mahi Mahi	Samsonfish	Snapper	Tuna (SBT, YFT, Big Eye)	Skipjack (Striped) Tuna	Wahoo	Yellowtail Kingfish	Spanish Mackerel	Shark Mackerel
Cm	Kg	Kg	Kg	Kg	Kg	Kg	Kg	Kg	Kg	Kg	Kg
86	8.33	8.35	5.47	8.71	11.30	13.67	15.34	3.46	8.04	4.70	7.06
87	9.16	8.63	5.65	9.02	11.67	14.15	15.94	3.60	8.31	4.88	7.34
88	8.87	8.91	5.83	9.34	12.05	14.66	16.55	3.73	8.57	5.06	7.60
89	9.16	9.19	6.01	9.66	12.44	15.17	17.18	3.87	8.85	5.25	7.86
90	9.44	9.48	6.20	10.00	12.83	15.69	17.82	4.02	9.12	5.44	8.13
91	9.74	9.78	6.40	10.32	13.23	16.23	18.48	4.16	9.40	5.64	8.39
92	10.04	9.78	6.59	10.67	13.64	16.77	19.16	4.31	9.70	5.85	8.66
93	10.34	10.40	6.80	11.02	14.06	17.34	19.85	4.48	9.99	6.06	8.92
94	10.65	10.71	7.00	11.38	14.49	17.93	20.56	4.63	10.29	6.27	9.19
95	10.97	11.04	7.21	11.75	14.92	18.51	21.29	4.80	10.59	6.49	9.50
96	11.29	11.36	7.42	12.12	15.36	19.10	22.04	4.97	10.90	6.71	9.81
97	11.62	11.70	7.64	12.50	15.82	19.71	22.80	5.14	11.21	6.94	10.13
98	11.96	12.04	7.86	12.89	16.27	20.34	23.59	5.31	11.54	7.18	10.42
99	12.30	12.39	8.09	13.29	16.74	20.98	24.39	5.49	11.87	7.42	10.79
100	12.64		8.31	13.70		21.61		5.67	12.21	7.67	11.09
101	13.00		8.55	14.12		22.30		5.85	12.55	7.92	11.43
102	13.36		8.79	14.54		22.98		6.06	12.89	8.18	11.77
103	13.72		9.03	14.97		23.67		6.25	13.25	8.44	12.10
104	14.10		9.27	15.41		24.39		6.46	13.61	8.71	12.43
105	14.48		9.52	15.86		25.10		6.66	13.96	8.98	12.76
106	14.86		9.78	16.32		25.85		6.88	14.33	9.26	13.10
107	15.25		10.04	16.78		26.59		7.08	14.71	9.55	13.43
108	15.65		10.30	17.26		27.35		7.30	15.09	9.84	13.76
109	16.06		10.57	17.74		28.15		7.53	15.48	10.14	14.13
110	16.47		10.84	18.23		28.93		7.76	15.87	10.45	14.49
111	16.88		11.11	18.74		29.74		7.99	16.28	10.76	14.87
112	17.31		11.39	19.25		30.56		8.23	16.69	11.08	
113	17.74		11.68	19.77		31.41		8.47	17.10	11.41	
114	18.18		11.97	20.30		32.26		8.72	17.52	11.74	
115	18.63		12.26	20.84		33.13		8.98	17.96	12.07	
116	19.08		12.56	21.38		34.01		9.23	18.40	12.42	
117	19.54		12.86	21.94		34.91		9.47	18.83	12.77	
118	20.00		13.17	22.51		35.84		9.76	19.28	13.13	
119	20.48		13.49	23.09		36.78		10.04	19.73	13.49	
120	20.93		13.80	23.67		37.72		10.31	20.19	13.86	

Changes have been made to club rules for all fish other than sharks and bilfish effective 1st October 2014.

Important details are:

- The standard form of measure will be either a Shimano Bragmat or IGFA measuring device.
- All fish will be required to be measured not estimated.
- Only fork length will be accepted.
- Lengths will be rounded down to the nearest full cm.
- Fish under 60cm will not be tagged as per NSW DPI guidelines.
- For fish under 60cm a Measure and Release card will be used.
- For fish 60cm and over (70cm for yellowtail kingfish) standard GFAA tagging practices will be maintained.
- All tagged or released fish will be treated as captures

for points calculations

- To calculate points for competitions all released fish will be treated as captures.
- Weights will be allocated from data collected on this club provided length vs weight table; variations in weight due to the condition of fish will not be considered for released fish.
- Photos are to be taken of the fish on the Bragmat for checking purposes if requested by the weigh-master.
- Fish weighed will still use actual recorded weight not the data table weight.
- Data collected from weighed fish will be compared annually against data for consistency and accuracy, with any changes needed to be made before the start of the new fishing year.
- All members will be provided with data table of weight estimates.

## Example Calculation and Measure and Release Card

**THE GAME FISHING ASSOCIATION OF AUSTRALIA INC.**  
**MEASURE & RELEASE CARD No. MR 15447**  
 Please complete & return to your Club Secretary or Moderator

**Example calculation**

A 74.7cm sea-run fish is caught on 4kg line  
 Weight from table is 5.55kg (rounded down to 74cm)  
 Point calculation is points =  $\frac{\text{weight} \times 100}{\text{line class}}$   
 $\frac{5.55 \times 100}{4} = 138.75 \text{ points}$

Date: \_\_\_\_\_ Boat Name: \_\_\_\_\_ Boat ID No: \_\_\_\_\_  
 Angler's Name & ID No: \_\_\_\_\_  
 Club: \_\_\_\_\_ State: \_\_\_\_\_  
 Location: \_\_\_\_\_  
 Species: \_\_\_\_\_  
 Measured X = 1 Length \_\_\_\_\_  
 Est. Weight \_\_\_\_\_ Line Class \_\_\_\_\_

**SHIMANO**





# GFAA Eligible Species

GFAA rules are not included in the issue of Strike but are readily available in the GFAA Journal or at [www.gfaa.asn.au](http://www.gfaa.asn.au).

The Eligible Species guide is taken from the GFAA website and filtered to only include species which are likely to be encountered by PGFC members.

Eligibility criteria are subject to change. Please confirm the current list from [www.gfaa.asn.au](http://www.gfaa.asn.au).

Common Name	Scientific Name	Capture	Tag & Release	Min Length T&R	Measure Release	Max Length M&R	Species Elig All Tackle Length	Min Length All Tackle Length
ALBACORE	Thunnus alalunga	Y	Y	60+	Y	<60	Y	61
AMBERJACK	Seriola dumerilii	Y	Y	60+	Y	<60	Y	90
BARRACUDA	Sphyrna spp.	Y	Y	60+	N		N	
BONITO	Sarda spp.	Y	Y	60+	Y	<60	N	
BROADBILL	Xiphias gladius	Y	Y	60+	N		N	
CHINAMAN	Symphorus nematophorus	Y	N		Y		Y	50
COBIA	Rachycentron canadum	Y	Y	60+	Y	<60	Y	85
EAGLE RAY	Myliobatis australis	Y	Y	60+	N		N	
KINGFISH, Yellowtail	Seriola lalandi	Y	Y	70+	Y	<70	Y	80
MACKEREL, Broad Barred	Scomberomorus semifasciatus	Y	Y	60+	Y	<60	N	
MACKEREL, Narrow Barred	Scomberomorus commerson	Y	Y	60+	Y	<60	Y	100
MACKEREL, Shark	Grammatorcynus bicarnatus	Y	Y	60+	Y	<60	N	
MACKEREL, Spotted	Scomberomorus spp.	Y	Y	60+	Y	<60	N	
MAHI MAHI (Dolphin Fish)	Coryphaena spp.	Y	Y	60+	Y	<60	Y	
MARLIN, Black	Makaira indica	Y	Y	60+	N		N	
MARLIN, Pacific Blue	Makaira mazara	Y	Y	60+	N		N	
MARLIN, Striped	Tetrapturus audax	Y	Y	60+	N		N	
MULLOWAY (Jewfish)	Argyrosomus hololepidotus	Y	Y	60+	Y	<60/150	Y	60
QUEENFISH	Scomberoides spp.	Y	Y	60+	Y	<60	Y	60
RAINBOW RUNNER	Elagatis bipinnulatus	Y	Y	60+	Y	<60	N	
SAILFISH	Istiophorus platypterus	Y	Y	60+	N		N	
SALMON, Australian	Arripis spp.	Y	Y	40+	Y	<40/50	Y	50
SAMSON FISH	Seriola hippos	Y	Y	60+	Y	<60	Y	90
SHARK, Blue	Prionace glauca	Y	Y	100+	N		N	
SHARK, Gummy	Mustelus antarcticus	Y	Y	100+	N		N	
SHARK, Hammerhead	Sphyrna spp.	Y	Y	100+	N		N	
SHARK, Mako	Isurus spp.	Y	Y	100+	N		N	
SHARK, Porbeagle	Lamna nasus	Y	Y	100+	N		N	
SHARK, Thresher	Alopias spp.	Y	Y	100+	N		N	
SHARK, Tiger	Galeocerdo cuvier	Y	Y	100+	N		N	
SHARK, Whaler	Carcharhinus spp.	Y	Y	100+	N		N	
SHARK, White	Carharodon carcharias	N	N		N		N	
SNAPPER	Pagrus auratus	Y	Y	40+	Y	<40/120	Y	50
SPANGLED EMPEROR	Lethrinus Nebulosus	Y	N		Y		Y	45
SPEARFISH	Tetrapturus spp.	Y	Y	60+	N		N	
TAILOR	Pomatomus saltatrix	Y	N		Y		Y	45
TREVALLY, Silver	Pseudocaranx dentex	Y	Y	35+	Y	<35/60	N	
TROUT, Brook	Salvelinus Fontinalis	Y	N		Y		N	
TROUT, Brown	Salmo trutta	Y	N		Y		Y	50
TROUT, Rainbow	Oncorhynchus mykiss	Y	N		Y		Y	50
TUNA, Bigeye	Thunnus obesus	Y	Y	60+	Y	<60	N	
TUNA, Bluefin	Thunnus thynnus orientalis	Y	Y	60+	Y	<60	N	
TUNA, Dogtooth	Gymnosarda unicolor	Y	Y	60+	N		N	
TUNA, Kawa Kawa	Euthynnus affinis	Y	Y	60+	Y	<60	N	
TUNA, Longtail	Thunnus tonggol	Y	Y	60+	Y	<60	Y	75
TUNA, Skipjack	Katsuwonus pelamis	Y	Y	60+	Y	<60	N	
TUNA, Southern Bluefin	Thunnus maccoyii	Y	Y	60+	Y	>60	N	
TUNA, Yellowfin	Thunnus albacares	Y	Y	60+	Y	>60	Y	90
WAHOO	Acanthocybium solandri	Y	Y	60+	N		N	



# WESTERN AUSTRALIA GAME FISHING RECORDS

PROVIDED BY WAGFA

Effective 27 October 2016

For the latest record update visit [gfaa.asn.au](http://gfaa.asn.au)

Species	Line Class	Angler	Weight	Location	Date
Amberjack	4	Jack Nelson	6.80	Rowley Shoals	26-Sep-80
	6	Shane Walton	13.15	Jurien Bay	22-Feb-14
	8	Tom Miller	15.25	Bunbury	21-Jul-16
Barracuda	1	Ryan Turner	6.62	Dampier	30-Jul-16
	2	Warren Newman	10.90	Exmouth	6-Dec-89
	3	Mark Tas	13.60	Mackerel Is	17-Sep-01
	4	Michael Burrage	7.20	Pt Hedland	14-Jul-96
	6	Jack Weiss	13.00	Mackerel Is	5-Sep-90
	8	Phil Tickle	27.10	Exmouth	31-Oct-92
	15	Steve Cook	20.20	Pt Hedland	17-Jul-96
Black Jewfish	3	Justin Trigwell	8.20	Roebuck Bay	11-Mar-09
	4	Justin Leech	18.80	Dampier	21-May-14
	6	Jake O'Brien	13.60	Port Hedland	18-Nov-07
	8	Jeffrey Cooper	11.00	Broome	3-May-08
	10	Andrew Crosby	17.00	Broome	12-May-07
Bonito	1	Ken Irvine	2.83	Geographe Bay	21-May-00
	2	John Williams	4.70	Augusta	27-Mar-89
Broadbill	24	Matthew Gates	45.70	Exmouth	12-Mar-08
	37	Tien Kiet Nguyen	96.80	Walpole	29-Mar-16
	60	Craig White	121.50	Abrolhos Islands	29-Oct-15
Chinaman	1	Jackson Tatham	3.90	Dampier	3-Aug-13
	2	Tim Perry	9.75	Dampier	12-Jun-07
	3	Andrew Epding	10.50	Exmouth	16-Mar-14
	4	Mark Cottrell	13.20	Dampier	3-Aug-96
	6	Anthony Giles	10.00	Pt Hedland	14-Jul-96
Cobia	2	Scott Sharpe	13.00	Dampier	29-May-16
	3	Travis Brinkhuis	14.32	Dampier	22-May-16
	4	Michael Quillian	16.10	Dampier	28-Oct-78
	6	John Walker	22.40	Pt Hedland	28-Jun-93
	8	Peter Mallia	19.80	Kalbarri	2-Jan-97
	10	Matthew Rack	36.40	Dampier	13-Oct-76
	10	Ryan Turner	20.85	Dampier	5-Oct-13
	15	David Hugill	16.00	Kalbarri	12-May-96
	4	Leith Larham	8.32	Pt Hedland	14-Sep-08
Eagle Ray	2	Phillip Nicholls	6.80	Geographe Bay	11-Apr-92
	6	Bruce McCormick	21.40	Cape Naturaliste	11-Apr-92
Kingfish - Yellowtail	1	Dean Eggleston	3.98	Yallingup	15-Jul-01
	2	Dean Eggleston	5.15	Yallingup	19-Aug-01
	3	Carl Babarskas	3.15	Lancelin	27-Jan-01
	4	Geoff Irvine	7.60	Canal Rocks	17-Mar-95
	8	Rusty Ellis	12.60	Geographe Bay	12-Mar-00
Mackerel - Broad Barred	1	Brenton Cartledge	6.60	Dampier	31-Jul-15
	2	Russell Leaver	7.40	Dampier	8-Jun-97
	3	Jackson Tatham	7.90	Dampier	29-Apr-12
	4	Phill Gardiner	7.40	Exmouth	2-Nov-99
	6	Glen E Walker	8.00	Dampier	6-Jul-92
Mackerel - Narrow Barred	1	Troy Wright	13.90	Exmouth	20-Oct-00
	2	Mick Smith	17.30	Exmouth	4-Nov-01
	3	Wayne Brown	36.40	Karratha	6-Aug-00
	4	Glenn D Barlow	27.80	Pt Hedland	17-Aug-03
	6	Brett Thompson	33.40	Pt Hedland	1-Jul-01
	8	Bob Burdinat	36.40	Coral Bay	1-Jun-87
	10	Ian Anesbury	28.00	Exmouth	21-Oct-97
	15	Murray Lewin	29.90	Exmouth	30-Oct-94
Mackerel - Shark	24	Barry Wrightson	38.80	Rottneest Is	5-May-78
	1	Ryan Turner	6.70	Dampier	30-Jul-16
	2	Damien Wham	7.06	Rottneest Island	21-May-06
	3	M G Paterson	10.89	Exmouth	14-Oct-76
	4	Peter Berryman	9.05	Abrolhos Islands	18-Apr-07
	6	Col Roberts	9.40	Jurien Bay	15-Apr-89
	8	Murray Lewin	12.10	Exmouth	4-Nov-94
	3	Timothy Fuller	5.60	Exmouth	27-Dec-04
Mackerel - Spotted	3	Chris Bechard	4.10	Kalbarri	1-Mar-97
	4	Paul George-Kennedy	5.35	Abrolhos Is	22-Apr-15
Mahi Mahi	1	Steve Pitman	7.10	Exmouth	13-Aug-94
	2	Ray Gansberg	9.40	Exmouth	23-Oct-97
	3	David A Wood	10.40	Rottneest Is	17-Feb-96
	4	Bob Biernat	12.50	Rottneest Is	8-May-97
	6	Gerry O'Loughlin	12.30	Exmouth	7-Nov-92
	8	Terry Pittard	13.40	Exmouth	13-Nov-98
	8	Ben Knight	9.70	Exmouth	8-Oct-14
	10	Phil Tickle	19.30	Exmouth	20-Oct-97
	15	Peter Dohnt	15.30	Exmouth	18-Nov-95



Species	Line Class	Angler	Weight	Location	Date
Marlin - Black	Fly	4 Phil Perry	40.00	Dampier	30-Jul-93
		6 Frank Csiczak	24.00	Dampier	4-Aug-85
		8 Wayne Miller	34.00	Dampier	31-Jul-92
		10 Graeme Sunderland	33.00	Dampier	4-Aug-90
	Fly	10 Aaron Rampling	36.70	Exmouth	12-Sep-16
		15 Rowan S Smith	149.20	Exmouth	12-Mar-08
		15 Aaron Rampling	30.10	Exmouth	9-Sep-12
		24 Neil Silver	155.10	Exmouth	28-Mar-09
		37 Luke Groen	296.90	Exmouth	12-Dec-13
Marlin - Blue	Fly	60 Gary Wayland	286.50	Exmouth	8-Dec-86
		15 Graham Jones	200.00	Exmouth	7-Nov-98
		15 Ben Knight	123.80	Exmouth	2-Sep-14
		24 Robert Freedman	271.80	Exmouth	30-Oct-88
		37 Rowan Smith	330.10	Exmouth	30-Oct-12
Marlin - Striped		60 Rowan Smith	368.20	Exmouth	21-Feb-14
		15 Bob Biernat	30.00	Exmouth	19-Oct-97
		24 Graham Maunder	48.00	Abrolhos Is	26-Apr-94
Mulloway		37 Pel Robson	46.00	Abrolhos Is	25-Apr-94
		2 Roger Spera	14.50	Pt Hedland	15-Oct-02
		3 Aaron Bussell	20.20	Geographe Bay	16-Sep-01
		4 Shane Eggleston	17.80	Geographe Bay	28-Jun-00
Queenfish	Fly	6 Paul Arnold	15.50	Kalbarri	30-Aug-92
		1 Ray Gansberg	7.80	Exmouth	25-Oct-02
		2 Ray Gansberg	8.10	Exmouth	4-Nov-91
		3 Brett Thompson	11.10	Pt Hedland	10-Nov-01
		4 Leon Callander	10.60	Pt Hedland	28-Dec-95
		6 John Clark	9.60	Exmouth	17-Nov-93
		8 Wayne Barber	10.40	Exmouth	28-May-91
		3 Leith Larham	4.20	Pt Hedland	9-Apr-07
		4 Leith Larham	5.40	Pt Hedland	9-Apr-07
Rainbow Runner		3 Russell Leaver	4.20	Dampier	17-Jul-00
		4 Ken Keiley	5.80	Exmouth	16-Sep-91
Sailfish	Fly	2 Phil Perry	25.40	Exmouth	9-Nov-98
		3 Phil Tickle	26.50	Exmouth	19-Oct-97
		4 Ben Treasure	36.50	Exmouth	4-Nov-91
		6 Vic Raynor	78.00	Exmouth	11-Jan-83
		6 Ben Knight	23.60	Exmouth	15-Oct-13
		8 Vic Barrett	52.10	Exmouth	30-Oct-83
	Fly	10 Graham Pattemore	36.40	Exmouth	10-Sep-84
		10 Ben Knight	36.40	Exmouth	8-Aug-12
		15 Aaron Rampling	33.30	Exmouth	17-Sep-11
Salmon Australian	Fly	24 Ronald S Wilson	58.60	Exmouth	5-Nov-93
		1 Rhyss Whittred	5.80	Fremantle	7-Nov-14
		2 Brian Arnett	5.79	Rottneest Island	26-Apr-14
		3 Mark Brown	6.80	Yallingup	12-Mar-04
		3 Jonathon Weston	4.31	Fremantle	2-Apr-16
		4 Tom Miller	6.25	Bunker Bay	14-Apr-15
		6 Dean Eggleston	6.20	Yallingup	15-Mar-98
Salmon Threadfin	Land Base	6 Tom Miller	6.35	Myalup	15-Apr-15
		1 Anthony Boekhorst	6.30	Pt Hedland	3-May-01
		2 Brett Thompson	5.90	Pt Hedland	13-Sep-01
		3 Brett Thompson	7.80	Pt Hedland	11-Nov-01
		4 Jay Wheelock	8.00	Karratha	4-Feb-01
Samson Fish		6 Graham MacPherson	14.60	Broome	14-Apr-95
		1 Matthew Bell	7.90	Geographe Bay	21-Mar-10
		2 Trevor Bell	11.80	Geographe Bay	21-Mar-10
		3 Matthew Bell	26.60	Geographe Bay	3-Sep-05
		4 Rusty Ellis	28.60	Cape Naturaliste	15-Oct-00
		6 Terry Coote	31.50	Canal Rocks	20-Mar-86
		8 Rhyss Whittred	29.75	Rottneest Island	28-Dec-09
		10 David Bell	31.20	Geographe Bay	13-Mar-98
		15 David Ellis	29.00	Cape Naturaliste	16-Jun-02
Shark - Blue		24 Terry Coote	36.50	Cape Naturaliste	31-Jan-93
		15 John Howarth	135.50	Rottneest Trench	6-Nov-82
		37 Peter Goodes	95.20	Rottneest Trench	16-May-91
Shark - Hammerhead		2 Trevor Bell	14.20	Geographe Bay	28-Mar-03
		3 Trevor Bell	17.40	Busseton	29-Mar-02
		4 Kade Ross	154.80	Exmouth	13-Mar-13
		6 Shane Wunhyn	38.40	Exmouth	2-Nov-92
		8 Ryan Turner	153.20	Exmouth	12-Mar-13
		10 Gavin Jones	92.40	Pt Hedland	12-Mar-95
		15 Darren Bowden	144.40	Enderby Is	2-May-93
		24 Peter McMullen	154.00	Exmouth	28-Oct-82
Shark - Mako		1 Adrian Pike	5.60	Cape Naturaliste	28-Mar-84
		4 Ken Irvine	30.00	Geographe Bay	13-Mar-99
		6 Trevor Bell	65.20	Geographe Bay	11-Mar-06
		8 Trevor R Lewis	35.80	Eagle Bay	20-Sep-98
		10 Trevor R Lewis	99.20	Eagle Bay	17-Mar-96
		24 Terry Coote	344.00	Exmouth	30-Oct-88
		60 Sir Richard Trowbridge	271.00	Rottneest Trench	22-Apr-82



Species	Line Class	Angler	Weight	Location	Date
<b>Shark - Thresher</b>	24	Bob Biernat	85.20	Rottneest Trench	7-May-00
<b>Shark - Tiger</b>	3	Luke Leech	74.10	Dampier	6-Apr-16
	4	Travis Brinkhuis	110.60	Exmouth	21-Mar-14
	6	Mark Hourn	19.40	Exmouth	15-Oct-05
	8	Terry Coote	239.00	Dampier	4-Aug-84
	10	Richard Horlock	284.60	Dampier	3-Aug-08
	15	Paul Skehan	104.80	Dampier	12-Feb-90
	24	Ian Lannary	400.40	Dampier	22-Nov-98
	37	Kurt Decker	141.20	Exmouth	24-Aug-01
	60	Ken Patrick	347.50	Rottneest Trench	12-Feb-89
<b>Shark - Whaler</b>	1	Anthony Boekhorst	3.60	Pt Hedland	16-Feb-00
	2	Ray Gansberg	9.00	Exmouth	6-Nov-98
	3	Jay Wheelock	13.00	Dampier	2-Jun-01
	4	Paul Bailey	40.40	Exmouth	23-Oct-00
	6	Michael Brown	33.50	Exmouth	22-Oct-97
	8	Wayne Parker	33.40	Pt Hedland	27-Jun-95
	10	Peter Mallia	61.60	Kalbarri	26-Nov-95
	15	Jason Hornhardt	98.80	Dampier	13-Jun-92
<b>Snapper</b>	24	Peter Gorman	250.00	Exmouth	8-Nov-89
	1	Trevor Bell	3.54	Geographe Bay	19-Aug-01
	2	Rod Mitchell	5.80	Kalbarri	28-Feb-93
	3	Trevor Bell	13.60	Geographe Bay	13-Apr-03
	4	Mark Brown	14.20	Cape Naturaliste	20-Sep-98
	6	Louis Rummer	16.20	Cockburn Sound	27-Oct-01
	8	Graham D Nottle	12.88	Mindarie Keys	17-Aug-96
<b>Spangled Emperor</b>	10	Basil Downs	12.20	Jurien Bay	26-Apr-87
	1	Clinton Damian	3.30	Exmouth	29-Mar-09
	2	Travis Brinkhuis	4.40	Exmouth	12-Mar-12
<b>Tailor</b>	3	Clinton Damien	3.80	Exmouth	14-Mar-04
	1	Laurie Malton	2.00	Kalbarri	13-Oct-00
	2	Laurie Malton	4.30	Kalbarri	27-Dec-00
	3	Laurie Malton	4.50	Kalbarri	6-Nov-01
<b>Trevally - Big Eye</b>	4	Gregory McDougall	6.50	Kalbarri	19-Oct-97
	1	Jackson Tatham	1.10	Dampier	28-May-11
<b>Trevally - Bludger</b>	2	Steve Pitman	2.70	Exmouth	13-Aug-93
	4	Michael Burrage	9.60	Pt Hedland	10-Jul-94
	6	Robert Elliott	10.65	Mackerel Is	3-Sep-92
<b>Trevally - Giant</b>	4	Leith Larham	4.80	Pt Hedland	30-Dec-06
	1	Rowan Smith	4.00	Exmouth	29-Mar-09
	2	Ross Gardam	8.00	Exmouth	1-Nov-96
	3	Scott Sharpe	16.00	Dampier	25-Mar-16
	4	Michael Burrage	13.20	Pt Hedland	30-Oct-94
	6	Warren Cornelius	30.20	Monte Bello Is	7-Apr-81
	8	Colin Barron	39.50	Exmouth	9-Nov-89
	10	Peter Brock	39.80	Exmouth	22-Oct-81
	10	Mark Hourn	13.10	Exmouth	19-Jan-13
	15	Anthony Boekhorst	30.60	Rowley Shoals	4-Oct-95
<b>Trevally - Gold Spot</b>	24	Ray Neville	37.60	Exmouth	6-Aug-81
	1	Justin Leech	6.80	Dampier	31-Jul-15
	3	Peter Babarskas	9.80	Mackerel Is	6-Sep-02
	4	Mark Cottrell	11.20	Dampier	2-Aug-96
	6	Mike Burrage	12.00	Pt Hedland	6-Jul-97
	10	Michael Wunhym	12.60	Exmouth	7-Aug-88
<b>Trevally - Golden</b>	1	Ray Gansberg	10.60	Exmouth	5-Nov-01
	2	Ray Gansberg	9.40	Exmouth	7-Nov-98
	2	Mark Hourn	3.00	Exmouth	18-Nov-12
	3	Jack Clarke	9.80	Dampier	1-Aug-14
	3	Mark Hourn	4.30	Exmouth	30-Apr-06
	4	Steve Pitman	12.60	Exmouth	23-Jan-92
	6	Graeme Morris	12.25	Pt Hedland	7-Aug-96
<b>Trevally - Golden</b>	8	John Constantine	14.10	Exmouth	4-Nov-94
	10	Des Ryan	11.30	Exmouth	8-Nov-95
<b>Tuna - Big Eye</b>	6	Terry Coote	12.20	Exmouth	26-Oct-00
	8	John Cramer	22.00	Rottneest Trench	12-Jan-02
<b>Tuna - Dog Tooth</b>	4	Rhyss Whittred	8.80	Rowley Shoals	4-Oct-95
	6	Mike Roennfeldt	46.00	Rowley Shoals	11-Oct-86
	8	Anthony Boekhorst	10.80	Rowley Shoals	5-Oct-94
	10	Darren Boulton	16.20	Rowley Shoals	20-Sep-00
	15	Rhyss Whittred	23.60	Rowley Shoals	7-Oct-94
<b>Tuna - Kawa Kawa</b>	1	Carl Ryan	5.50	Exmouth	19-Aug-94
	2	Tim Perry	5.30	Port Samson	26-Aug-07
	3	Peter Babarskas	5.20	Mackerel Is	13-Aug-96
	4	John Clark	7.60	Exmouth	23-Nov-90
	6	Chris Waltho	8.60	Exmouth	10-Nov-90
	8	Geoff Moyle	8.90	Exmouth	8-Nov-95
<b>Fly</b>	3	Leith Larham	4.00	Port Hedland	26-Aug-07



Species	Line Class	Angler	Weight	Location	Date
Tuna - Longtail	1	Luke Leech	2.77	Dampier	19-Apr-16
	2	Jackson Tatham	13.60	Dampier	14-Apr-12
	3	Travis Brinkhuis	13.80	Dampier	2-Aug-14
	4	Jackson Tatham	12.60	Pt Hedland	29-Apr-12
	6	Nick Rowley	14.50	Exmouth	16-Aug-97
	8	Col Roberts	18.50	Pt Hedland	8-Jul-91
	10	Shane Krakouer	14.80	Kalbarri	26-May-96
Tuna - Skipjack	15	John Yates	24.30	Exmouth	26-Dec-89
	1	Ian Cornelius	3.80	Exmouth	25-Jul-82
	2	Mark Jarrett	7.05	Rottneest Island	29-Aug-10
	3	Trevor Scott	7.40	Rottneest Trench	9-Feb-02
	4	Steve Webb	7.80	Rottneest Trench	20-Feb-83
Tuna - Southern Bluefin	8	Bob Biernat	10.60	Rottneest Trench	1-Apr-00
	1	Rhyss Whittred	6.54	Rottneest Island	7-Aug-10
	2	Grant Mills	6.06	Rottneest Island	30-May-08
	3	Glen Rattigan	6.93	Rottneest Island	29-Aug-10
Tuna - Yellowfin	4	David Valentino	7.26	Rottneest Island	5-Sep-10
	2	Ian Cornelius	9.00	Exmouth	26-Jul-82
	3	Ivan Quartermaine	15.20	Bernier Is	28-May-73
	6	Jamie Greaves	33.30	Kalbarri	27-Feb-99
	8	Deon van der Westhuizen	27.99	Jurien bay	1-May-15
	10	John Cramer	39.00	Rottneest Trench	28-Apr-01
	15	Kim F Thorson	55.10	Rottneest Trench	17-Apr-95
Wahoo	24	Trevor Scott	39.00	Rottneest Trench	28-Apr-01
	37	Basil Downs	84.00	Rottneest Trench	2-Apr-95
	2	Chris Wilkes	12.40	Mackerel Island	3-Sep-07
	3	Matt Reece	14.40	Mackerel Island	23-Aug-04
	4	Michael Thomas	20.00	Exmouth	10-Nov-89
	6	Chris Brogan	21.50	Coral Bay	7-Aug-86
	8	John Edwards	30.60	Mackerel Is	7-Aug-86
	10	Steve Richardson	25.50	Dampier	28-Aug-89
	15	Ivan Carter	20.30	Exmouth	3-Nov-90
	24	Peter Dohnt	29.60	Exmouth	8-Nov-90

Barracuda	1	Chloe Hornhardt	2.58	Dampier	31-Jul-16
	2	Vicki Searle	13.40	Dampier	1-Aug-16
	3	Carol-Anne Bickford	4.70	Exmouth	25-Oct-97
	4	Patti Horwood	12.90	Mackerel Is	23-Sep-86
	6	Joy Burrage	7.60	Pt Hedland	16-Mar-97
	8	Kay Webber	31.60	Coral Bay	4-Sep-84
	10	Rhonda Kelly	19.10	Exmouth	28-Oct-96
Barramundi	1	Vicki Searle	3.90	Karratha	9-Nov-08
	8	Talisha Cook	12.20	Fortescue River	5-Dec-04
Black Jewfish	10	Karen Crosby	15.20	Broome	23-Mar-08
Broadbill Swordfish	60	Tracey Rushford	87.00	Exmouth	22-Mar-07
Chinaman	3	Rachael Green	9.60	Pt Hedland	10-Apr-98
	4	Rachael Green	5.40	Pt Hedland	7-Jun-98
Cobia	2	Wendy Patzak	4.40	Dampier	5-Jul-91
	3	Jo Decker	11.90	Exmouth	3-Apr-09
	4	Sheridan Munds	15.20	Karratha	31-Mar-01
	6	Frances White	15.00	Dampier	9-Oct-93
	8	Jo Decker	13.20	Exmouth	1-Apr-09
	10	Bronwyn Rack	16.50	Dampier	29-Oct-78
Kingfish - Yellowtail	2	Faye Pike	2.00	Cape Naturaliste	31-Mar-90
Mackerel - Broad Barred	2	Joanne Tatham	6.50	Dampier	4-Aug-13
	3	Vicki Searle	6.20	Dampier	4-Aug-08
	4	Jo Decker	7.40	Exmouth	21-Aug-10
Mackerel - Narrow Barred	1	Carol-Anne Bickford	2.00	Exmouth	12-Jan-00
	2	Robyn Fenech	15.40	Exmouth	30-Oct-02
	3	Mesha Prince	22.00	Mackerel Is	29-Aug-03
	4	Rita Lewin	23.30	Exmouth	11-Nov-98
	6	Kathy Ryan	24.00	Exmouth	3-Mar-96
	8	Joy Burrage	30.20	Pt Hedland	16-Aug-98
	10	Leisa-anne Hull	25.00	Exmouth	26-Oct-94
	15	Lois Fenton	22.40	Pt Hedland	6-Jul-97
Mackerel - Spotted	1	Carol-Anne Bickford	1.60	Exmouth	12-Jan-00
Mackerel - Shark	1	Jan Prince	3.30	Exmouth	16-Aug-97
	2	Carol-Anne Bickford	8.20	Exmouth	25-Oct-97
	3	Robyn Fenech	9.60	Exmouth	29-Oct-03
	4	Sandra Steel	10.18	Dampier	14-May-06
	6	Kathy Ryan	6.90	Exmouth	6-Nov-91
Mahi Mahi	1	Sangeeta Menon	3.20	Rottneest Island	14-Mar-10
	2	Kathy Ryan	7.00	Exmouth	19-Aug-96
	4	Kathy Ryan	8.70	Exmouth	20-Aug-96
	6	Marie Quinlin	11.90	Exmouth	4-Nov-92
	8	Jan Prince	10.50	Exmouth	8-Nov-91
Marlin - Black	4	Wendy Patzak	22.50	Dampier	25-Aug-91
	8	Trish Johnson	53.50	Dampier	25-Jun-89
	10	Wendy Patzak	40.60	Dampier	29-Sep-91
	15	Jo Decker	93.50	Exmouth	21-Mar-10



Species	Line Class	Angler	Weight	Location	Date
Marlin - Striped	10	Jan Prince	30.50	Exmouth	1-Nov-92
	37	Julie Gheradi	46.50	Exmouth	29-Jul-78
Mulloway	3	Karen Lee Jeffs	12.10	Pt Hedland	18-Apr-01
	6	Nola Tynan	10.50	Pt Hedland	25-Apr-02
Queenfish	1	Rita Lewin	6.10	Exmouth	31-Oct-01
	2	Jessica Hornhardt	7.10	Dampier	18-May-16
	3	Sahra Pitman	7.10	Exmouth	25-Mar-11
	4	Bronwyn Rack	10.50	Dampier	14-Apr-91
	6	Sally Clark	6.40	Exmouth	21-Oct-94
Sailfish	2	Bronwyn Rack	29.00	Dampier	30-May-92
	4	Melva Rack	27.20	Dampier	12-Jul-77
	6	Jennifer Potts	19.80	Dampier	3-Aug-91
	8	Kay Webber	39.00	Exmouth	9-Jul-83
	10	Debbie Snook	35.60	Exmouth	7-Oct-94
	15	Fay Agnew	48.08	N W Cape	7-Sep-70
Salmon Australian	1	Sangeeta Menon	4.87	Rottneest Island	17-Apr-10
	2	Sahra Pitman	4.65	Bunker bay	12-Apr-15
	3	Sahra Pitman	5.45	Bunker bay	12-Apr-15
	4	Sarah Coleman	5.45	Fremantle	15-Nov-14
Salmon Threadfin	1	Vicki Searle	3.15	George River	7-Oct-07
	2	Karen Lee Jeffs	5.20	Pt Hedland	20-May-01
	3	Talisha Cook	4.80	George River	7-Oct-07
Samson Fish	1	Caroline Davies	3.80	Geographe Bay	17-Jun-07
	2	Caroline Davies	6.80	Geographe Bay	15-Jul-07
	3	Caroline Davies	8.00	Eagle Bay	17-Feb-08
	4	Caroline Davies	18.40	Eagle Bay	14-Mar-09
	6	Robyn Fenech	19.20	Geographe Bay	11-Mar-00
	8	Katarina Mikic	29.40	Geographe Bay	8-Jun-02
	10	Christine Ezekiel	22.80	Jurien Bay	18-Mar-90
	15	Robyn Fenech	29.90	Geographe Bay	12-Mar-00
Shark - Hammerhead	24	Mia Cramer	24.00	Rottneest Is	7-Dec-00
	15	Lois Fenton	103.40	Pt Hedland	19-May-98
Shark - Tiger	6	Chloe Hornhardt	74.10	Dampier	8-May-16
	15	Wendy Patzak	324.00	Dampier	20-Jun-92
Shark - Whaler	1	Vicki Searle	2.90	Karratha	12-Oct-08
	2	Jessica Hornhardt	3.90	Dampier	24-Apr-16
	3	Shanae Cook	12.50	Exmouth	22-Mar-11
	4	Frances White	20.00	Dampier	28-Mar-93
	6	Jo Decker	34.90	Exmouth	1-Apr-09
	8	Wendy Patzak	35.40	Dampier	4-Aug-90
	15	Wendy Patzak	89.00	Dampier	29-Sep-91
	Land Base	Brettany Fuller	25.40	Exmouth	16-Dec-04
	Land Base	Tina Fuller	29.80	Exmouth	21-May-04
Snapper	1	Lee Murray	1.00	Kalbarri	4-Aug-96
	2	Valerie Carter	4.30	Kalbarri	2-Mar-96
	3	Charmaine Bell	6.60	Geographe Bay	30-Mar-03
Spangled Emperor	1	Connie Taylor	3.00	Exmouth	16-Mar-12
	2	Jan Prince	3.20	Exmouth	9-Mar-08
	3	Marie Pittock	3.30	Exmouth	31-Oct-03
	4	Shanae Cook	4.20	Exmouth	12-Mar-12
Tailor	2	Suzanne Malton	2.90	Kalbarri	13-Oct-00
Trevally - Big Eye	1	Jan Prince	2.20	Exmouth	3-Nov-96
	2	Jan Prince	4.30	Exmouth	18-Mar-04
Trevally - Bludger	3	Karen Lee Jeffs	5.20	Pt Hedland	17-Mar-01
	4	Enid Clark	4.00	Exmouth	28-Aug-93
	6	Narelle Hickling	7.20	Pt Hedland	29-Sep-02
Trevally - Giant	1	Rachael Green	2.20	Pt Hedland	14-Apr-01
	2	Vicki Searle	2.80	Dampier	1-Nov-08
	3	Bridgette Wright	14.10	Exmouth	20-Sep-03
	4	Belinda Barrow	14.50	Exmouth	5-Mar-94
	6	Wendy Brown	21.80	Pt Hedland	7-Nov-93
	8	Bronwyn Rack	10.50	Dampier	15-Jul-90
	10	Melva Rack	27.00	Dampier	12-Nov-78
Trevally - Gold Spot	1	Jessica Hornhardt	2.05	Dampier	1-Aug-16
	2	Rita Lewin	5.40	Exmouth	21-May-01
	3	Vicki Searle	6.40	Dampier	8-Oct-00
	4	Rochelle Ralston	9.80	Dampier	3-Aug-91
Trevally - Golden	1	Carol-Anne Bickford	9.60	Exmouth	12-Jan-00
	2	Connie Taylor	8.90	Exmouth	13-Mar-12
	3	Tayla Anne Clatworthy	9.70	Exmouth	29-Mar-09
	4	Nikki Murray	10.30	Exmouth	7-Aug-11
	6	Bronwyn Rack	11.80	Dampier	7-Aug-90
	8	Carol-Anne Bickford	13.10	Exmouth	12-Jan-00
Tuna - Kawa Kawa	10	Marie Pittock	10.40	Exmouth	22-Oct-97
	3	Vicki Searle	6.90	Dampier	26-Sep-10
	6	Kathy Ryan	7.70	Exmouth	3-Nov-94



Species	Line Class	Angler	Weight	Location	Date
Tuna - Longtail	2	Joanne Tatham	15.00	Dampier	15-Aug-11
	3	Joanne Tatham	12.50	Dampier	1-Aug-16
	4	Shanae Cook	13.40	Dampier	31-Jul-11
	6	Patricia Jackson	16.00	Dampier	3-Aug-85
Tuna - Skipjack	8	Marie Pittock	11.10	Exmouth	24-Oct-97
	3	Mia Cramer	5.26	Rottneest	3-Mar-08
Tuna - Southern Bluefin	4	Casey Sorrell	5.36	Rottneest Island	13-Nov-11
	1	Sangeeta Menon	4.20	Rottneest Island	4-Jul-10
	2	Sangeeta Menon	3.81	Rottneest Island	7-Feb-09
Tuna - Yellowfin	3	Casey Sorrell	5.08	Rottneest Island	18-Sep-10
	3	Valerie Carter	11.70	Kalbarri	28-Jan-95
	4	Lee Murray	13.40	Kalbarri	3-Mar-96
	6	Colleen M Bottrell	7.40	Exmouth	2-Nov-92
	10	Carol-Anne Bickford	20.20	Exmouth	27-Sep-97
	15	Susanne Warman	32.70	Dirk Hartog Is	19-May-77
	24	Michelle Callan	61.00	Exmouth	10-Nov-95
Wahoo	37	Jacquie Rushford	92.60	Exmouth	17-Jan-10
	4	Francine Gregory	8.20	Exmouth	4-Nov-92
	6	Kelly Anne Insull	20.60	Mackerel Island	25-Aug-08
	8	Debbie Snook	17.70	Exmouth	30-Oct-94
	10	Jo Decker	15.90	Exmouth	8-Jul-12

Barracuda	2	Clinton Damian	8.90	Exmouth	27-Oct-00
	3	Andrew Epding	9.40	Exmouth	24-May-00
	6	Ashley Magee	9.00	Pt Hedland	13-Jul-96
	8	Brendan Hourn	16.20	Exmouth	16-Jun-02
Black Jewfish	8	Eric Locke	11.00	Roebuck Bay	15-Mar-09
	10	Tristan Francks	14.40	Broome	8-Aug-07
Chinaman	1	Jackson Tatham	3.90	Dampier	3-Aug-13
	2	Rhys Clatworthy	2.40	Exmouth	23-Mar-07
	3	Toby Mason	5.07	Dampier	19-Jun-16
Cobia	3	Toby Mason	11.12	Dampier	10-Jul-16
	4	Grant Gregory	13.50	Exmouth	19-Jan-92
	6	Ashley Magee	8.40	Pt Hedland	17-Jul-96
Kingfish - Yellowtail	2	Carl Babarskas	2.99	Lancelin	3-Mar-01
	3	Carl Babarskas	3.15	Lancelin	27-Jan-01
Mackerel - Broad Barred	1	Toby Mason	6.16	Dampier	29-Jul-16
	2	Jackson Tatham	6.90	Dampier	25-Jun-11
	3	Jackson Tatham	7.90	Dampier	29-Apr-12
	4	Jackson Tatham	5.90	Dampier	29-Apr-12
Mackerel - Narrow Barred	3	Callum Horlock	18.90	Exmouth	13-Mar-16
	4	Cody Wright	17.80	Exmouth	7-Aug-11
	6	Daryl Anesbury	25.30	Exmouth	21-Oct-97
	10	Paul Donnes	27.20	Dampier	18-May-02
Mackerel - Shark	1	Toby Mason	4.22	Dampier	29-Jul-16
	2	Ben Crisp	8.70	Mackerel Is	7-Oct-87
	3	Brendan Hourn	5.00	Exmouth	27-Apr-03
	4	Ben Crisp	9.00	Mackerel Is	3-Oct-87
	6	Ben Patrick	8.00	Half Moon Reef	25-Apr-84
	8	Beau Britton	10.30	Exmouth	21-Oct-00
Mahi Mahi	1	Callum Horlock	6.20	Exmouth	16-Mar-16
	2	Carl Babarskas	3.50	Rottneest Trench	28-Apr-01
	4	Marcus J Maher	9.25	Rottneest Is	25-Apr-98
	6	Troy Wright	8.10	Exmouth	6-Nov-93
	10	Shane Damian	14.10	Exmouth	18-Oct-97
Marlin - Black	4	Bruce Wotherspoon	25.80	Dampier	1-Aug-92
	6	Craig Park	30.00	Dampier	1-Aug-86
Marlin - Blue	15	Scott Turrell	28.80	Exmouth	7-Apr-96
Marlin - Striped	60	Ben Miles	169.30	Exmouth	27-Oct-03
	24	Riley Smith	54.20	Exmouth	16-Sep-15
Queenfish	1	Ryan Hinchcliffe	7.30	Dampier	31-Jul-16
	2	Toby Mason	5.88	Dampier	18-Jun-16
	3	Callum Horlock	9.90	Dampier	23-Mar-11
	4	Ben Crisp	7.70	Mackerel Is	1-Oct-87
Sailfish	4	Ian French	30.00	Dampier	30-Jul-83
	6	Troy Wright	37.60	Exmouth	16-Aug-91
	10	Chris Zencich	24.00	Dampier	26-Sep-86
	15	Sam Czabayski	23.50	Broome	23-Jun-14
	24	Michael Harrington	26.50	Exmouth	10-Mar-04
Salmon Australian	3	Jason Burgoyne	5.20	Yallingup	14-Mar-98
Salmon Threadfin	4	Ashley Coote	5.66	Yallingup	13-Apr-03
	6	Michael Berthelsen	6.50	Dampier	19-Jul-91
Samson Fish	4	Jason Burgoyne	6.20	Geographe Bay	21-Dec-97
	6	Myles Blond	18.60	Rottneest Is	7-Feb-88
	8	Cody Rummer	24.36	Rottneest Is	2-Mar-03
	10	Stephen Pitard	27.00	Geographe Bay	30-Jan-99



## JUNIOR MALE RECORDS

Species	Line Class	Angler	Weight	Location	Date
<b>Shark - Whaler</b>	10	Ben Patrick	38.00	Rottneest Trench	20-Mar-83
<b>Spangled Emperor</b>	1	Jackson Tatham	1.10	Dampier	13-Aug-11
	2	Clinton Damian	4.00	Exmouth	10-Jul-96
	3	Brendan Hourn	3.30	Exmouth	15-Mar-03
<b>Tailor</b>	1	Ben Malton	2.40	Kalbarri	12-Nov-00
	3	Ben Malton	3.40	Kalbarri	14-Oct-01
<b>Trevally - Big Eye</b>	1	Jackson Tatham	1.10	Dampier	28-May-11
<b>Trevally - Bludger</b>	4	Raymond Slater	10.40	Pt Hedland	14-Jul-96
<b>Trevally - Giant</b>	1	Wade Clark	1.40	Exmouth	22-Mar-11
	2	Toby Mason	6.00	Dampier	30-Jul-16
	4	Grant Gregory	12.80	Exmouth	2-Feb-92
	8	Jamie Wotherspoon	16.50	Dampier	7-Aug-89
	10	Joshua Gusthart	26.00	Dampier	22-Feb-88
<b>Trevally - Gold Spot</b>	1	Jackson Tatham	2.10	Exmouth	24-Dec-11
	3	Jack Clarke	7.75	Dampier	7-Dec-13
	4	Matthew Pike	8.00	Dampier	3-Aug-91
	6	Clayton Prescott	9.50	Dampier	9-May-92
	8	Brendon Billet	10.40	Dampier	5-Aug-91
<b>Trevally - Golden</b>	1	Jackson Tatham	6.80	Dampier	3-Aug-14
	2	Clinton Damian	6.80	Exmouth	27-Sep-98
	3	Jack Clarke	9.80	Dampier	1-Aug-14
	4	Grant Gregory	10.40	Exmouth	9-Nov-91
	8	Brendon Billet	11.50	Dampier	7-Aug-89
<b>Trevally - Silver</b>	1	Jason Burgoyne	1.39	Geographe Bay	13-Mar-98
	2	Jason Burgoyne	2.20	Geographe Bay	21-Dec-97
<b>Tuna - Kawa Kawa</b>	2	Jackson Tatham	5.90	Dampier	3-Jul-11
	3	Nelson R Jeffs	4.80	Pt Hedland	5-Jun-98
	4	Troy Wright	6.70	Exmouth	4-Nov-93
	6	Daryl Anesbury	7.00	Exmouth	20-Oct-97
<b>Tuna - Longtail</b>	2	Jackson Tatham	13.60	Dampier	14-Apr-12
	3	Jackson Tatham	12.90	Dampier	25-Jun-11
	4	Jackson Tatham	12.60	Dampier	29-Apr-12
	6	Scott Turrell	19.60	Dampier	7-Aug-90
	8	Kurt Mead	14.30	Exmouth	28-Apr-95
	10	Steven Anesbury	10.30	Exmouth	26-Oct-00
<b>Tuna - Yellowfin</b>	6	Carl Babarskas	9.62	Lancelin	1-Oct-00
	37	Chris Rushford	79.20	Exmouth	16-Jan-10
<b>Wahoo</b>	6	Brendan Hourn	14.10	Exmouth	17-Aug-03
	10	Alex Nelson	13.00	Exmouth	23-Mar-11

## JUNIOR FEMALE RECORDS

<b>Barracuda</b>	1	Chloe Hornhardt	2.58	Dampier	31-Jul-16
	4	Patti Horwood	12.90	Mackerel Is	23-Sep-86
<b>Barramundi</b>	8	Talisha Cook	12.20	Fortescue River	5-Dec-04
	3	Shanae Cook	9.40	George River	31-Dec-06
<b>Cobia</b>	3	Talisha Cook	7.20	Dampier	3-Aug-08
<b>Mackerel - Broad Barred</b>	3	Chloe Hornhardt	5.72	Dampier	28-Feb-16
<b>Mackerel - Narrow Barred</b>	8	Mesha Prince	23.25	Exmouth	15-Apr-96
	15	Patti Horwood	19.40	Mackerel Is	7-Oct-87
<b>Mackerel Spotted</b>	1	Chloe Hornhardt	1.52	Dampier	19-Jun-16
<b>Mahi Mahi</b>	1	Mia Cramer	2.22	Rottneest Trench	29-Feb-04
	3	Mia Cramer	4.75	Rottneest Trench	20-Apr-02
<b>Mulloway</b>	6	Jessica Jarrett	6.36	Jurien Bay	2-May-15
<b>Queenfish</b>	1	Chloe Hornhardt	4.58	Dampier	26-Apr-16
	2	Jessica Hornhardt	7.10	Dampier	24-Apr-16
<b>Sailfish</b>	8	Bridgette Wright	31.20	Exmouth	24-Oct-04
	10	Tasmin Kyle	23.35	Dampier	27-Aug-16
	15	Shanae Cook	26.00	Dampier	27-Sep-10
<b>Salmon Threadfin</b>	1	Justine Boekhorst	1.40	DeGrey River	29-Nov-98
	2	Justine Boekhorst	2.10	DeGrey River	29-Nov-99
	3	Talsiha Cook	4.80	Geographe River	7-Oct-07
	4	Justine Boekhorst	10.50	Pt Hedland	16-Feb-00
<b>Samson Fish</b>	15	Maddison Cramer	27.04	Rottneest Is	30-Dec-00
	24	Mia Cramer	24.00	Rottneest Is	7-Dec-00
<b>Shark - Tiger</b>	6	Chloe Hornhardt	74.10	Dampier	8-May-16
	24	Mikayla Lannary	359.75	Dampier	25-Oct-15
<b>Shark - Whaler</b>	2	Jessica Hornhardt	3.90	Dampier	24-Apr-16
	3	Shanae Cook	12.50	Exmouth	22-Mar-11
	4	Talisha Cook	13.65	Dampier	8-Jan-06
	6	Shanae Cook	13.00	Dampier	30-Oct-11
	1	Anna Sutherland	2.40	Kalbarri	30-Jan-94
<b>Snapper</b>	2	Anna Sutherland	5.00	Kalbarri	28-Feb-93



JUNIOR FEMALE RECORDS	Species	Line Class	Angler	Weight	Location	Date
	Spangled Emperor	1	Jesse Sutton	1.10	Exmouth	6-Apr-14
		4	Shanae Cook	4.20	Exmouth	12-Mar-12
	Tailor	2	Rebecca Malton	4.10	Kalbarri	12-Oct-00
	Trevally - Giant	3	Bridgette Wright	14.10	Exmouth	20-Sep-03
		6	Shanae Cook	17.30	Exmouth	1-Apr-09
	Trevally - Gold Spot	1	Jessica Hornhardt	2.05	Dampier	1-Aug-16
		2	Bridgette Wright	5.30	Exmouth	29-Mar-03
	Trevally - Golden	1	Jesse Sutton	7.80	Exmouth	9-May-15
		3	Tayla Clatworthy	9.70	Exmouth	29-Mar-09
		4	Jesse Sutton	7.20	Exmouth	11-Apr-15
		6	Tayla Clatworthy	9.70	Exmouth	19-Jan-10
	Tuna - Longtail	4	Shanae Cook	13.40	Exmouth	31-Jul-11
	Tuna - Skipjack	3	Mia Cramer	4.64	Rottnest Is	2-Mar-03
		4	Mia Cramer	5.20	Rottnest Trench	22-Apr-01
	Tuna - Southern Bluefin	3	Jessica Jarrett	3.44	Rottnest Island	3-Jan-11
	Tuna - Yellowfin	4	Casey Jane Clark	10.25	Geraldton	31-May-15
		6	Casey Jane Clark	7.70	Geraldton	31-May-15
	Wahoo	8	Mikayla Lannary	9.26	Dampier	12-Sep-15

SMALL FRY MALE RECORDS	Barracuda	3	Dale Spera	7.40	Pt Hedland	14-Apr-06
		4	Joshua Spera	6.40	Pt Hedland	17-Apr-07
	Chinaman	1	Jackson Tatham	3.90	Dampier	3-Aug-13
	Mackerel - Broad Barred	2	Jackson Tatham	6.90	Dampier	25-Jun-11
		3	Jackson Tatham	7.90	Dampier	29-Apr-12
		4	Jackson Tatham	5.90	Dampier	28-Apr-12
	Mackerel - Narrow Barred	4	Cody Wright	17.80	Exmouth	7-Aug-11
		6	Tyson Tatham	9.70	Dampier	29-Apr-12
	Mackerel - Shark	2	Jackson Tatham	5.50	Exmouth	20-Dec-11
	Mahi Mahi	3	Zeyad El-Brolossy	3.00	Rottnest Is	23-Mar-13
	Queenfish	1	Jackson Tatham	4.60	Dampier	1-Aug-11
		2	Jackson Tatham	4.60	Dampier	31-Jul-11
		3	Callum Horlock	9.90	Dampier	23-Mar-11
	Shark - Whaler	2	Jackson Tatham	4.50	Dampier	21-May-11
	Spangled Emperor	1	Jackson Tatham	1.10	Dampier	13-Aug-11
	Trevalley - Big Eye	1	Jackson Tatham	1.10	Dampier	28-May-11
	Trevally - Golden	1	Jackson Tatham	6.80	Dampier	7-Jul-12
		2	Jackson Tatham	6.50	Dampier	8-Jul-12
		3	Jackson Tatham	8.10	Dampier	30-Apr-11
		4	Jackson Tatham	5.70	Dampier	27-Dec-10
	Trevally - Gold Spot	1	Jackson Tatham	2.10	Exmouth	24-Dec-11
		3	Jackson Tatham	6.20	Dampier	26-Apr-11
	Tuna Kawa Kawa	2	Jackson Tatham	5.90	Dampier	3-Jul-11
		3	Jackson Tatham	6.60	Dampier	12-Dec-10
		4	Jackson Tatham	7.00	Dampier	26-Dec-10
	Tuna - Large Scale	2	Jackson Tatham	5.50	Exmouth	20-Dec-11
	Tuna - Longtail	2	Jackson Tatham	13.60	Dampier	14-Apr-12
		3	Jackson Tatham	12.90	Dampier	25-Jun-11
		4	Jackson Tatham	12.60	Dampier	29-Apr-12
		6	Jackson Tatham	13.00	Dampier	29-Apr-12

SMALL FRY FEMALE RECORDS	Barramundi	3	Shanae Cook	9.40	George River	31-Dec-06
		8	Talisha Cook	12.20	Fortescue River	5-Dec-04
	Cobia	3	Jesse Sutton	5.30	Exmouth	26-Dec-14
		4	Shanae Cook	7.50	Dampier	8-Jan-06
	Mackerel - Broad Barred	3	Jessica Hornhardt	4.44	Dampier	10-Sep-16
	Mackerel - Narrow Barred	3	Amber Cloughessy	12.50	Dampier	24-Oct-10
		8	Amber Cloughessy	11.40	Dampier	5-Feb-11
		15	Amber Cloughessy	24.00	Dampier	5-Feb-11
	Spotted Mackerel	1	Chloe Hornhardt	1.52	Dampier	19-Jun-16
	Queenfish	1	Chloe Hornhardt	4.58	Dampier	26-Apr-16
		2	Jessica Hornhardt	7.10	Dampier	24-Apr-16
	Sailfish	8	Amber Cloughessy	15.60	Dampier	26-Sep-10
	Shark - Tiger	6	Chloe Hornhardt	74.10	Dampier	8-May-16
	Shark - Whaler	2	Jessica Hornhardt	3.90	Dampier	24-Apr-16
	Spangled Emperor	1	Jesse Sutton	1.10	Exmouth	6-Apr-14
	Trevally - Golden	1	Jesse Sutton	7.80	Exmouth	9-May-15
		3	Jesse Sutton	7.20	Exmouth	11-Apr-15
		4	Jesse Sutton	7.20	Exmouth	11-Apr-15
	Trevally - Gold Spot	1	Jessica Hornhardt	2.05	Dampier	1-Aug-16
	Tuna - Longtail	4	Chloe Hornhardt	9.88	Dampier	26-Jun-16
	Tuna - Skipjack	3	Desert Gray	3.80	Rottnest Island	20-Nov-11



## CLUB SPONSORS



**SHIMANO**



Mining & Hydraulic Supplies



## FAD SPONSORS



## PGFC AFFILIATIONS





# PGFC 2017 SEASON CALENDAR

Christmas Social Night	Tuesday 6th December 2016	RPYC Fremantle
Family Event – Treasure Hunt	Sunday 22nd January	TBA – Swan River
Social Night & Marlin Cup Briefing Marlin Cup *	Tuesday 7th February Saturday 11th to Sunday 12th February	RPYC Fremantle Rottnest Island
Social Night & Marlin Cup Presentations Shimano WA Open Briefing	Tuesday 7th March Thursday 30th March	RPYC Fremantle Jurien Bay Golf club
Shimano WA Open * Social Night	Friday 31st March to Sunday 2nd April Tuesday 11th April	Jurien Bay RPYC Fremantle
Social Night Ladies and Juniors' Day FAD Recovery	Tuesday 2nd May Saturday 6th May Wednesday 17th May	RPYC Fremantle RPYC Fremantle Approximate date
Social Night	Tuesday 6th June	RPYC Fremantle
Social Night	Tuesday 4th July	RPYC Fremantle
Social Night	Tuesday 1st August	RPYC Fremantle
Social Night	Tuesday 5th September	RPYC Fremantle
Social Night Annual Presentation Dinner	Tuesday 3rd October Saturday 14th October	RPYC Fremantle RPYC Crawley
Annual General Meeting Opening Weekend	Tuesday 14th November Saturday 25th & Sunday 26th November	RPYC Fremantle Rottnest Island
Christmas Social Night	Tuesday 5th December	RPYC Fremantle

\* WAGFA Sanctioned Tournament Qualifying Tournament for the 2018 Offshore World Championships.  
Note that there will be other fishing competitions during the year announced at shorter notice.

Check [pgfc.com.au](http://pgfc.com.au) for any changes that may occur

## WA Public Holidays 2017

New Year's Day	Sunday 1st January	ANZAC Day	Tuesday 25th April
Australia Day	Thursday 26th January	Western Australia Day	Monday 5th June
Labour Day	Monday 6th March	Queen's Birthday	Monday 25th September
Good Friday	Friday 14th April	Christmas Day	Monday 25th December
Easter Monday	Monday 17th April	Boxing Day	Tuesday 26th December

## WA School Holidays 2017

Saturday 8th April - Sunday 23rd April
Saturday 1st July - Sunday 16th July
Saturday 23rd September - Sunday 8th October
Friday 15th December - Tuesday 28th January 2018